

All
London
Green
Grid

Wandle Valley

Area Framework



Draft 24.09.10

Contents

| | |
|----|--|
| 1 | Foreword and Introduction |
| 2 | All London Green Grid Vision and Methodology |
| 3 | ALGG Framework Plan |
| 4 | ALGG Area Frameworks |
| 5 | ALGG Governance |
| 6 | Area Strategy |
| 8 | Area Description |
| 9 | Strategic Context |
| 10 | Vision |
| 12 | Objectives |
| 14 | Opportunities |
| 16 | Project Identification |
| 18 | Clusters |
| 20 | Projects Map |
| 22 | Rolling Projects List |
| 32 | Phase One Early Delivery |
| 34 | Project Details |
| 50 | Forward Strategy |
| 52 | Gap Analysis |
| 53 | Recommendations |
| 56 | Appendices |
| 56 | Baseline Description |
| 58 | Links |
| 60 | Group Membership |

Cover Image: Confluence of The Graveney and Wandle

Foreword

The Wandle Valley Regional Park Development Board came into being to promote a major new regional park for London. Identified in the Mayor's London Plan, the proposed Wandle Valley Regional Park (WVRP) has grown towards realisation, with high level support from the local authorities along the Wandle and from the Greater London Authority (GLA).

We are building on the excellent work undertaken by the board and its project partners in developing the concept of the regional park, established the different working groups and outlined a vision to take us forward.

'Our shared vision is for an innovative, sustainable and high quality regional park in the Wandle Valley that is easily accessible, with a rich and thriving biodiversity, offering recreational, landscape, heritage, cultural and resource management benefits in which local people and businesses can take pride and ownership.' (Groundwork 2008)

The River Wandle is at the heart of the development of the WVRP. Increasing awareness of all aspects of our environment, reflected in changes in government and local authority policies, has extended the reach of the WVRP development project to enhancing the whole river valley. We are keenly aware of the contribution the River Wandle can make to our lives, whether through sport, recreation, business or improving important wildlife habitats.

I am delighted that the WVRP Development Board has been given the opportunity to lead on the All London Green Grid (ALGG) process for the Wandle Valley area. I know that it will make a significant contribution in moving the development of the regional park forward because the Vision we are working to is supported by the objectives of the ALGG. The ALGG process identifies a range of projects led by different organisations, unites them in a single document, and shows clear evidence of what each project can contribute.

Consequently we have been able to identify strategic opportunities for positive change in the Wandle Valley, and have moved the WVRP a step closer to emerging as a major new recreational and natural space for London.



Councillor McDermott,
Chairman, Wandle Valley
Regional Park Development Board

Introduction – All London Green Grid Vision and Methodology

Introduction

The various and unique landscapes of London are recognised as an asset that can reinforce character, identity and environmental resilience. Delivered alongside existing infrastructure such as transport, utilities and schools an enhanced network of green spaces or green infrastructure (GI) can serve to shape and support sustainable communities, respond to the challenges of climate change and deliver an improved quality of life.

The Green Grid approach provides a strategic framework for creating, improving, managing and maintaining high quality Green Infrastructure that promotes sustainable transport such as cycling and walking. This approach has been extremely successful in accelerating delivery in East London through the East London Green Grid (ELGG).

A London-wide Green Grid can make the capital a more attractive sustainable and prosperous city. The potential benefit to London's economy is significant and can be achieved through a range of outputs that respond to climate change, promote walking, cycling and accessibility, reduce environmental risks to make more sustainable business locations and shape and support growth more generally.

A green grid approach can help promote localism and build a sense of place and ownership by communities.

The replacement London Plan (Oct, 2009) supports the extension of the Green Grid to the whole of London. Furthermore, Leading to a Greener London (July 2009), the Mayor's environment programme for the capital, and his London's Great Outdoors (Nov, 2009) initiative, an ambitious programme to deliver high quality public spaces across London, have placed GI at the heart of his objective to make London a greener, healthier, more resilient city. Policy 2.18 of the replacement London Plan outlines the Mayor's commitment to the ELGG approach to work with partners across London to deliver GI and create new regional parks in areas of deficiency, including the Wandle Valley Regional Park. Further policies within the replacement plan support urban greening (5.10), local character (7.4), enhancements to the public realm (7.5), heritage-led regeneration (7.9), the protection of local open space and addressing deficiency in open space (7.18), enhancing and protecting biocivervsity (7.19) and the creation and promotion of use of Blue Ribbon Networks (7.24). These are all policies that support the green grid approach within the Wandle Valley.

The All London Green Grid (ALGG) project will be a key framework for delivering the bold aims of these initiatives and facilitating the delivery of programmes and projects promoted by the boroughs and their partners. The approach can also provide an opportunity to identify and develop green space and GI jobs and skills training for Londoners. The vision of the ALGG is:

"to create a network of interlinked, multi-purpose open spaces with good connections to the places where people live and work, public transport, the Green Belt and the Thames, to provide a richly varied landscape that will include diverse uses to appeal to all." (ELGG Primer, Nov, 2006)

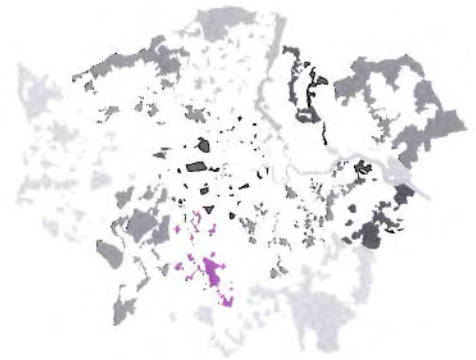
The expanded programme objectives for the ALGG to achieve the vision and maximise the benefits of the network include:

- increasing access to open space
- increasing access to nature
- managing flood risk and urban heat
- making sustainable travel connections
- enhancing distinctive visitor destinations and boosting the visitor economy
- promoting healthy living
- enhancing green space and GI sector skills
- promoting sustainable food production
- promoting quality of design, management and maintenance
- enhancing heritage features and landscape character
- improving air quality and soundscapes.

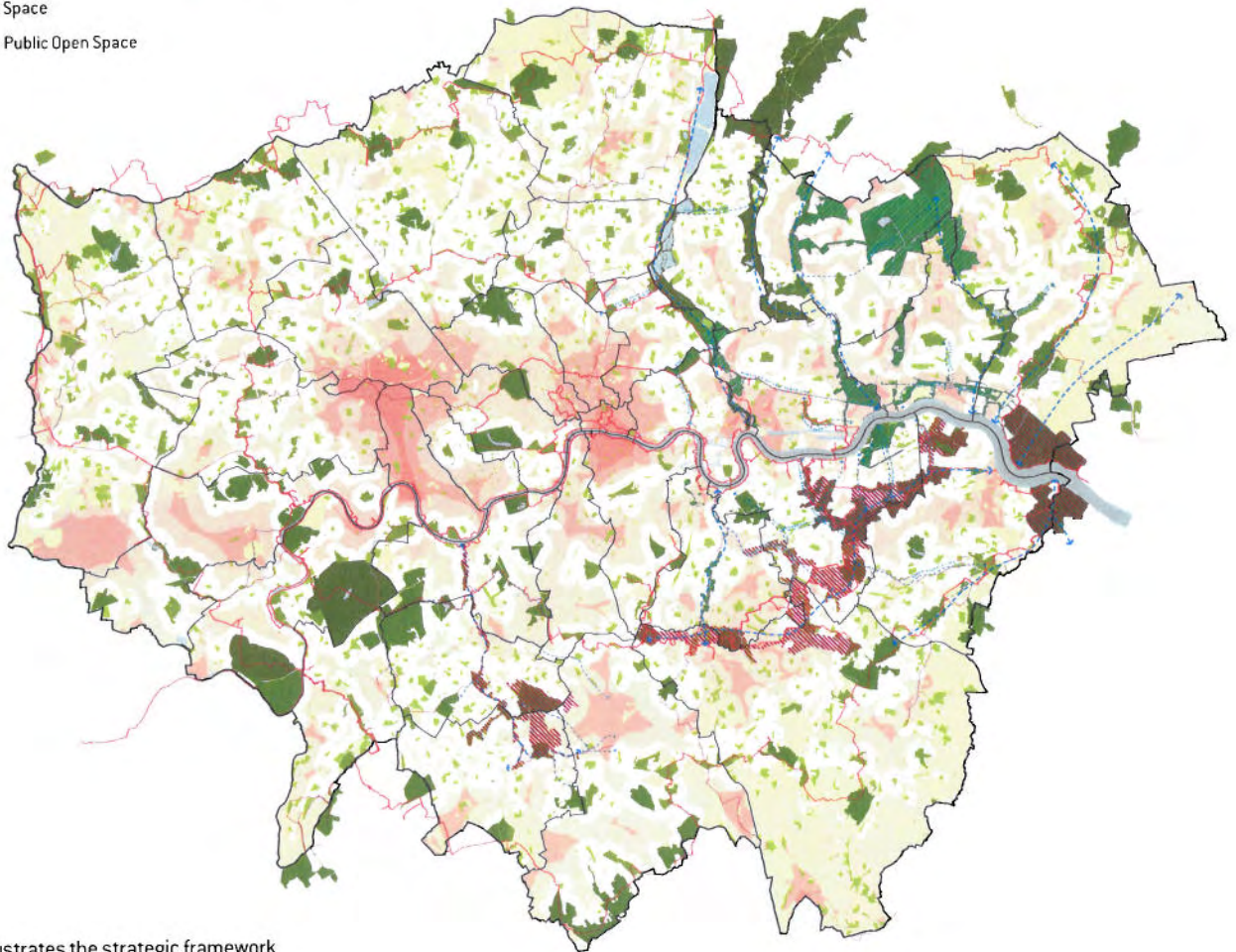
An important aspect of the ALGG framework will be to achieve a better understanding of the economic value of the multiple benefits provided by GI to determine the potential value of the open space network to London's economy through: reduction in environmental risks; improvements to health; enhancing local neighbourhoods; and the attractiveness of London as a place to live, work and visit.

ALGG Area Groups and Governance

The Green Grid process includes the formation of steering groups, with representatives from partners and other stakeholders to develop and implement the Green Grid Vision, objectives and projects, area by area. The ALGG objectives include working with established partnerships, such as that that already exists in the Wandle Valley, through the Wandle Valley Regional Park Development Board, Management Board and the Wandle Forum.

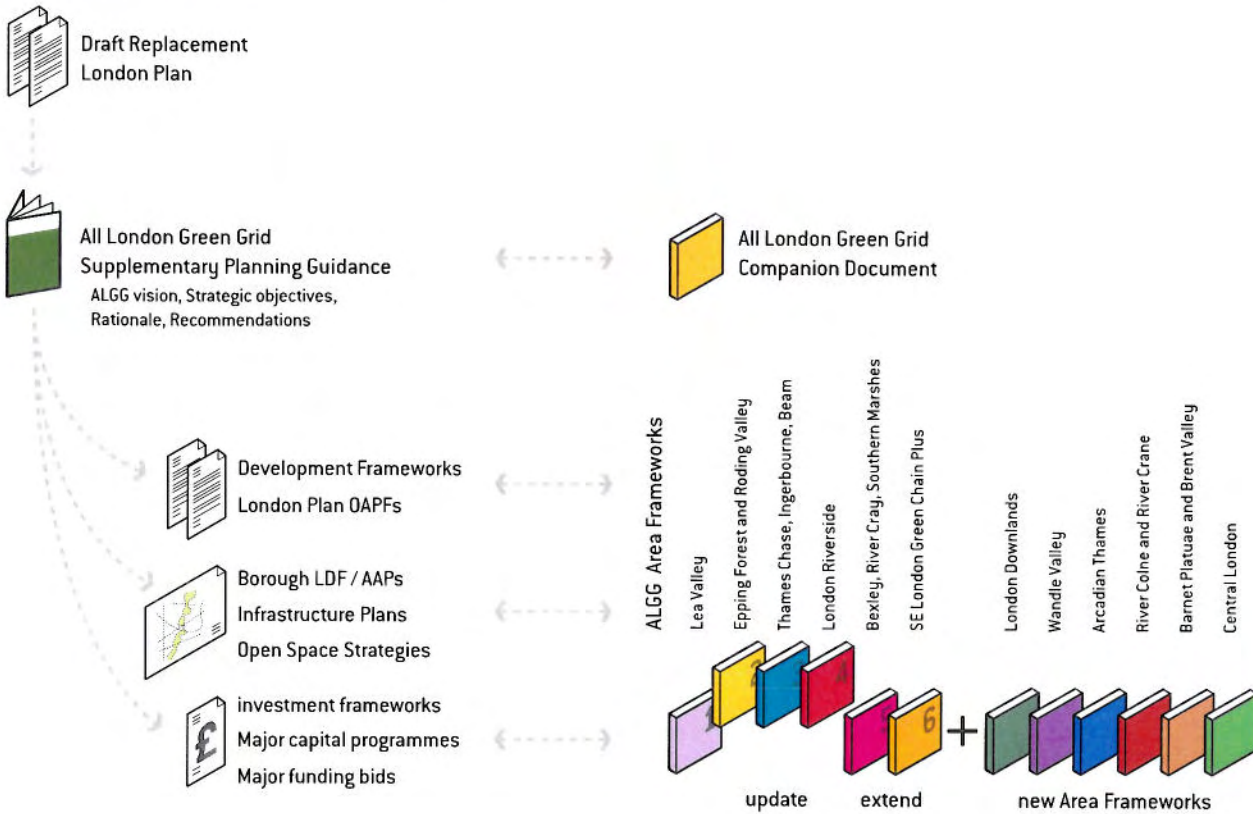


Introduction – ALGG Framework Plan



The map above illustrates the strategic framework plan for the All London Green Grid draft SPG to the London Plan. The composite drawing illustrates open space typologies, open space deficiency and primary transport corridors. It identifies strategic opportunities for the Green Grid area.

Introduction – ALGG Area Frameworks



Section 1 Area Strategy

This section examines the context and baseline conditions, to propose a vision, area objectives and a set of area strategic opportunities in line with the ALGG SPG. Together these form a framework for future change, project development and evaluation.

Section 2 Project Identification

A schedule of project suggestions for consideration by the area group, design advisor and working group. Including interventions to be delivered through development, and those requiring site acquisition. Each project is mapped and described in a rolling project list.

Section 3 Phase One Early Delivery

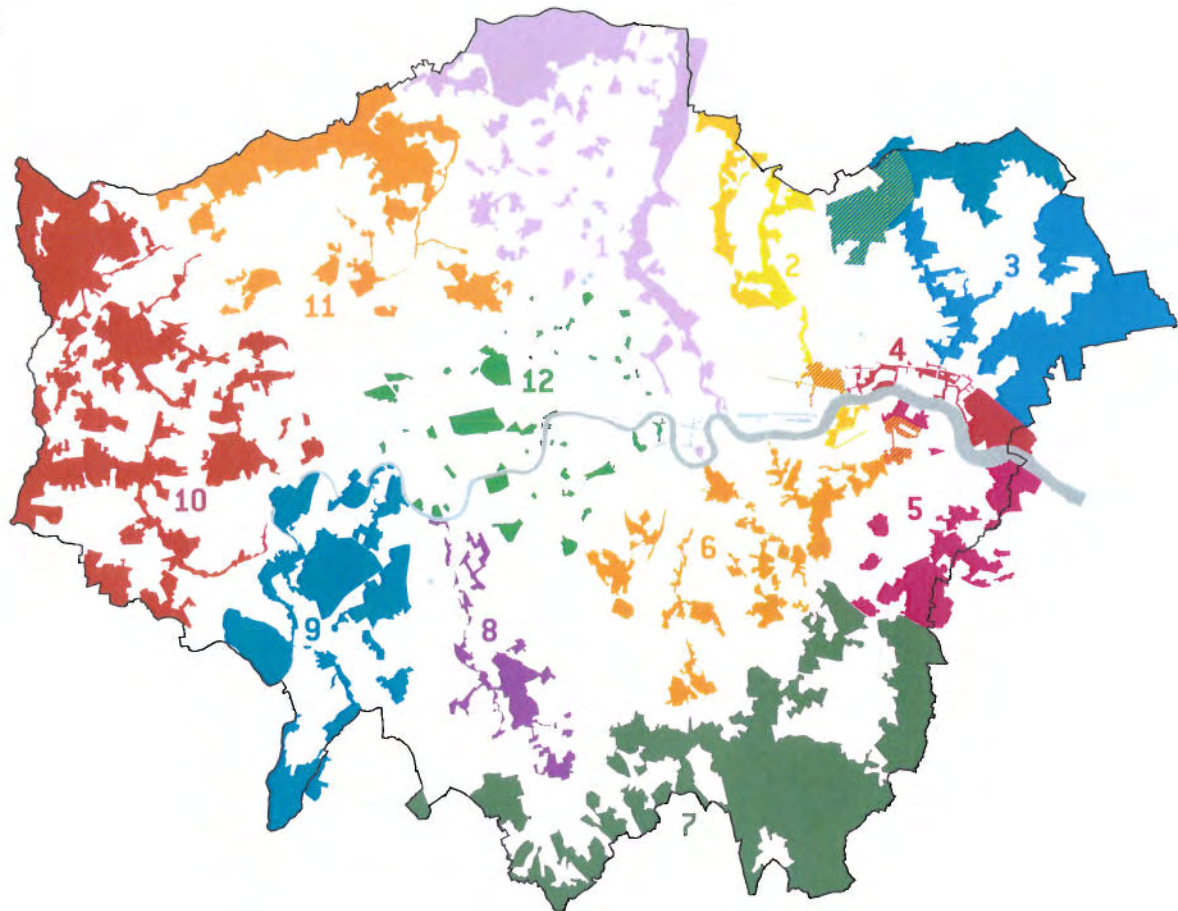
The results of the area's project review and assessment, identifying the projects which best deliver the strategic objectives, as well as those which are feasible and deliverable. Thereby constituting a first phase of delivery.

Section 4 Forward Strategy

The area chair and design advisor sum up the area's delivery of the Green Grid vision and identify any gaps, outlining the next steps in order to develop and deliver phase one. They give their aspirations, and recommendations, including future governance options.

Introduction – ALGG Governance

- 1 Lea Valley
- 2 Epping Forest and River Roding
- 3 Thames Chase Beam and Ingrebourne
- 4 London Riverside
- 5 Bexley, River Cray and Southern Marshes
- 6 South East London Green Chain Plus
- 7 London Downlands
- 8 Wandle Valley
- 9 Royal Thames
- 10 River Colne and Crane
- 11 Brent Valley
- 12 Central London



The Forward Strategy proposes that London be divided into twelve Green Grid Areas as illustrated above. The formation of ALGG Area steering groups will bring together the London boroughs, representatives of partner agencies and other stakeholders to develop and implement the Green Grid vision, objectives and projects, area by area.



Morden Hall Park

A landscape photograph showing a green grassy field in the foreground. In the middle ground, there is a line of trees, including several tall, thin trees with reddish-brown foliage and some darker evergreens. The sky is filled with dark, heavy clouds, with a small patch of blue visible. The overall mood is somewhat somber due to the cloudy sky.

Area Strategy

This section examines the local and strategic context to establish a distinct vision and set of objectives for the Wandle Valley and the proposed Wandle Valley Regional Park. These have been developed to establish a framework for future change, project development, evaluation and prioritisation.

Area Strategy – Area Description

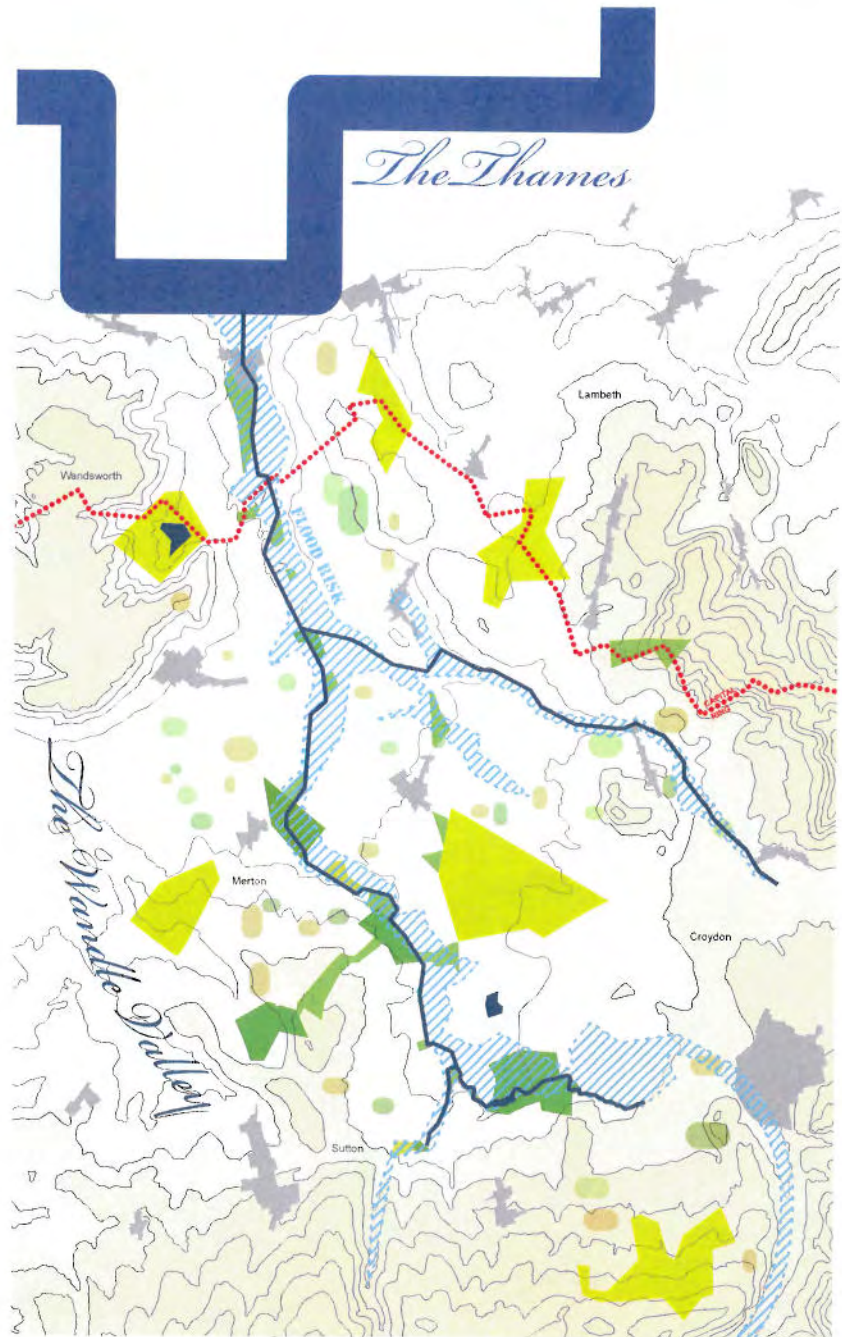
Area Description

The River Wandle emerges through the chalk strata of the North Downs and flows through the Wandle Valley to join the River Thames nearly 20 miles to the North. Originating in the protected natural countryside to the south of London, and crossing an increasingly urban landscape to join the Thames just three miles from the centre of London, it is a River that has changed with the development of London and its people, but at its essence remains a chalk stream, a quiet natural presence in the urbanised South London that is now home to millions of people.

The last two centuries have seen dramatic change in the Wandle Valley through the process of urbanisation - with a series of small rural town centres growing and merging, catalysed by the development of the Valley as a significant industrial centre. This process has transformed the river and its immediate surroundings - modifying the natural course and flow of the river. Much of the river is today characterised by a back-land quality - lying to the rear of houses, behind industrial estates, bordering allotments and sports-fields. The River has occasionally become hidden in the urban environment - covered over, contained, difficult to access and poorly connected to the neighbourhoods that surround it.

Yet the banks of the river offer valuable opportunities for cycling, walking and fishing. The Wandle Trail, an established footpath and cycleway, follows the course of the River wherever access is possible. In places along the River there are natural banks, wet woodlands, large commons and water meadows, all rich in biodiversity. There are also remnants of rich architectural and industrial heritage, grander landscapes of country estates, and areas of open space. Many of the open spaces preserved along the Wandle are the legacy of the role the Valley has taken in the development of recreational sport in the 20th century, with extensive playing fields in both private club and local authority ownership.

Some of open spaces are currently poorly maintained, overgrown and do not offer the visitor a welcoming or attractive experience, but all have the potential to form part of a high quality network of linked spaces. Whilst previous phases of industrialisation and urbanisation may have had little regard to the natural and ecological value of the River, we are now witnessing a growing realisation of the value of the Wandle Valley as a strategic resource for the city - in which the protection and restoration of its natural qualities will play an important role in making a vital and vibrant piece of green infrastructure.



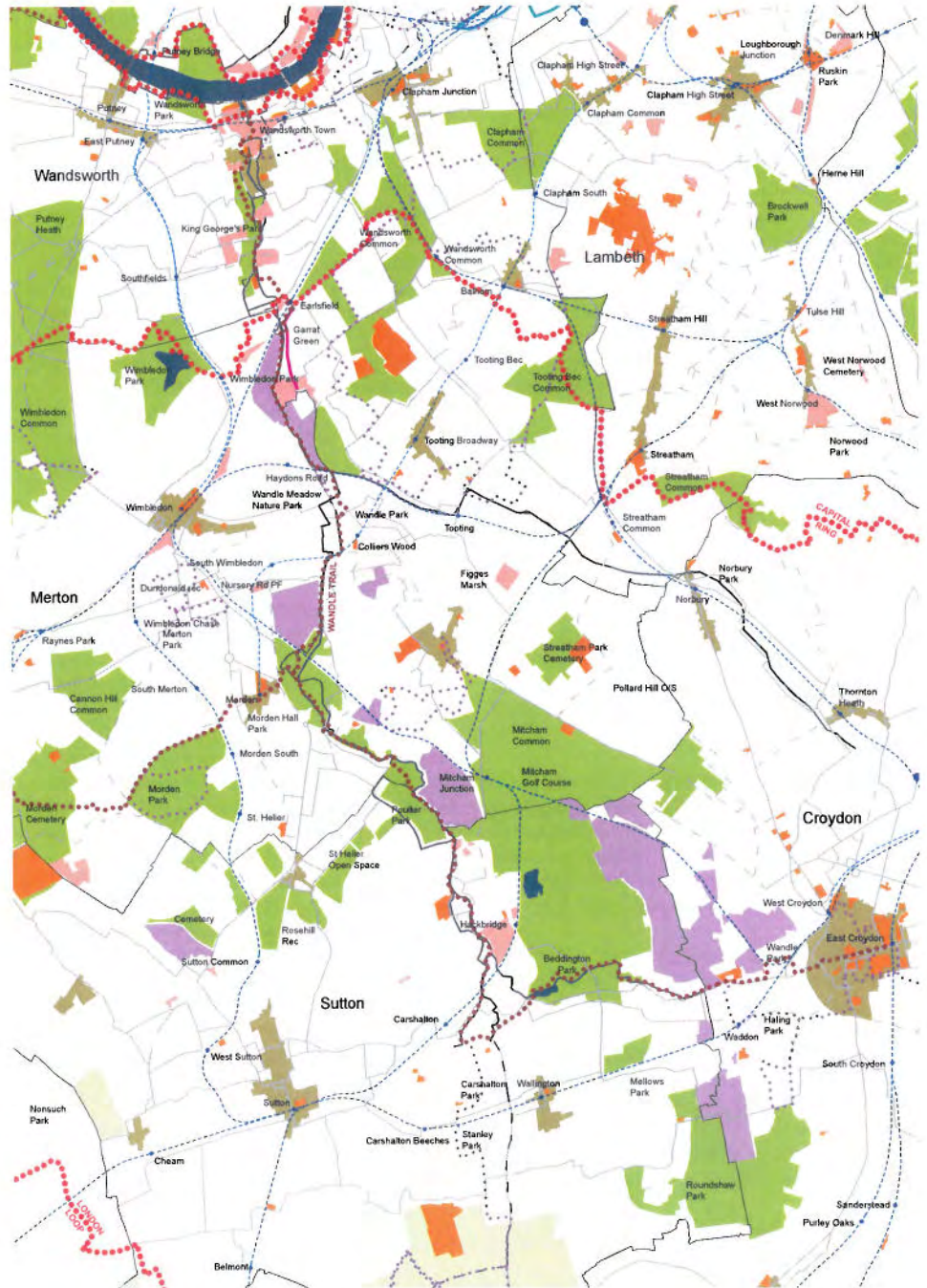
Area Strategy -- Strategic Context

Strategic Context

The Wandle Valley is home to a significant amount of industrial and employment space - a presence built upon the history of the water mills developed along the river, but which continues to play an important strategic role in terms of London's industrial capacity, and much of which is designated by the GLA as Strategic Industrial Land.

Modern industry has tended, however, to turn its back on the river valley, resulting in spaces along the River which are marginalised, poorly maintained, and difficult to access. This isolation has also served to protect these spaces, making them tranquil and natural in aspect. An important future challenge for the Wandle Valley will be how to create a more open relationship between industrial areas and the green space network which it borders upon; working with landowners to allow greater access between or through industrial sites, improving permeability for pedestrians, cyclists and adjacent communities.

A number of major regeneration projects also offer the opportunity to rethink the integration of the River Valley with its surrounding urban fabric. In Merton, the Council is developing visionary plans to rethink Colliers Wood and rediscover the important heritage of Merton Abbey Mills. In Wandsworth, the Ram Brewery redevelopment is a significant town centre regeneration project offering the opportunity to improve river access and its ecology. In Sutton the Council is working to develop proposals for a major sustainable neighbourhood regeneration at Hackbridge which will transform the urban fabric bordering the river. In Croydon, a number of projects offer the potential to establish an improved connection between the Wandle Valley and the Town Centre.



Area Strategy – Vision

Vision

The River Wandle and its associated landscapes are an undervalued resource for London. At present, the River is a linking thread through the Valley lined by intermittent open green spaces and bank-side open space margins, interrupted by tracts of housing, industrial development and transport infrastructure such as roads and railways. Currently these are managed piecemeal by the different landowners with no sense of how each piece of open space contributes to the river valley as a whole.

In the past few years a number of strategies and policies have been developed around the concept of green infrastructure. A green infrastructure (GI) is a strategically planned and delivered network of high quality green spaces and other environmental features such as green roofs, street trees and other elements of urban greening. Designed and managed as a multifunctional resource a green Infrastructure is capable of delivering a wide range of environmental and quality of life benefits for local communities. The open and green spaces of the Wandle Valley provide the basis for a high quality green infrastructure united with an overall vision for its development and management.

The Strategies around the creation of green infrastructure are complementary to the Vision that has been produced by partners working on the development of the Wandle Valley as a new Regional Park for London:

'Our shared vision is for an innovative, sustainable and high quality Regional Park in the Wandle Valley that is easily accessible, with a rich and thriving biodiversity, offering recreational, landscape, heritage, cultural and resource management benefits in which local people and businesses can take pride and ownership.'

A Regional Park would unify the entire network of open spaces along the river under that shared vision. Each open space would contribute to the greater linear whole, with sustainable transport links between them. Visitor facilities would be improved, heritage assets would be restored, and the natural environment enhanced. Planning policies would be put in place to protect the Regional Park and the area around it, and greater emphasis given to the creation and enhancement of green infrastructure through planning gain.

All of this would combine to make the Wandle Valley Regional Park a green asset for Londoners,

creating a destination that offers access to the natural environment, with spaces for people to relax, play, exercise, learn new skills, come together as a community, learn about their heritage and together create the heritage of the future.

Improving the quality of existing network of open spaces and rediscovering the natural signature of the Regional Park, working to enhance the Biodiversity of the Valley, with planting of native trees, de-canalising the entrapped river, creating reed-bed flood catchment areas, promoting urban greening (green roofs, street trees, etc) and restoring natural habitats all will contribute to the re-greening of the Wandle Valley.

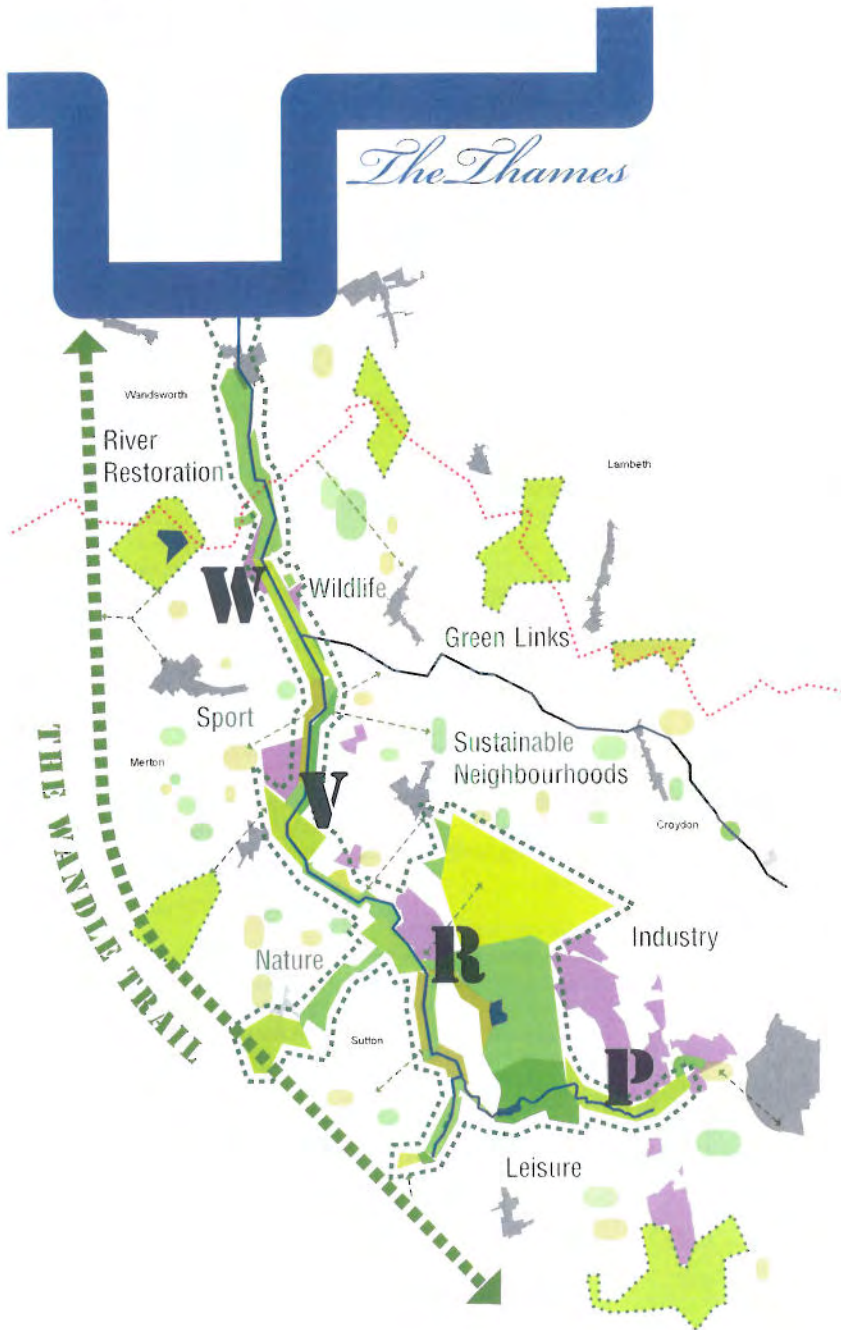
Restoring and interpreting the rich heritage assets including watermills, mill races, Merton Priory, Merton Abbey Mills, ancient watercress beds, historic landscapes and structures, will all contribute to a greater sense of place, and ensure that the Regional Park becomes a destination at a regional scale.

At the same time, the Wandle Valley Green Grid will be strongly rooted in its local communities and the neighbourhoods which surround it. Involving the local community in activities and festivals, developing volunteering opportunities and reaching out to hard to reach people, will enable many more people to access the benefits of the Regional Park, and create a stronger sense of community and belonging amongst those living in the area.

Enabling people to access the Regional Park, through improved public transport, sustainable transport links and improved and new cycling and walking routes, and removing physical barriers will spread the benefit of the Regional Park to a greater number of people.

All of these objectives will support the overall Vision for the Park, which is all about improving the quality of people's environment and through improving what is on offer in their local community.

The most important result of these efforts will be to create spaces that become woven into the fabric of people's lives, where they go for walks along the River, have picnics, play after school, public spaces that become special places to the individuals who use them.



Governance Arrangements

The Wandle Valley Regional Park concept was first outlined in the publication of the Vision for the Park, by Groundwork, the result of an EU funded Saul Project, which came to an end in June 2008.

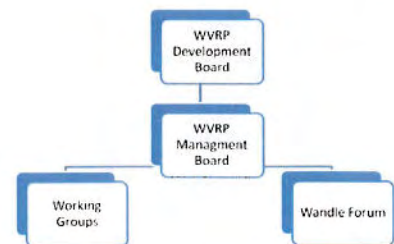
The momentum created by this project instigated a new phase of development, with the Regional Park initiative receiving some funding from the Local Authorities. A transitional phase governance structure was put in place to ensure effective decision making and strategic direction.

The diagram below outlines the new hierarchy of bodies that came into being in January 2010. This structure comprises:

- a Development Board, consisting of elected representatives from the local authorities and the GLA taking the executive role;
- a Management Board of stakeholder organisations undertaking the development of strategy and to oversee the work programme;
- a number of special interest Working Groups whose work is directed by the Management Board,
- the Wandle Forum, made up of community representation, which will continue as the consultative body.

These bodies will remain in existence during the transitional phase as the WVRP is developed from concept to reality. It is this set of bodies who will work to identify resources and governance structures for the management of the future WVRP.

A key part of the Wandle Valley Green Grid Area Framework is to progress the development of the future governance and financing of the future Wandle Valley Regional Park. The Development Board is shortly to commission an options study to be complete in January 2011 to identify future governance and funding structure options.



Area Strategy – Objectives



Access to Open Space

To improve the quantity and quality of open space within the Wandle Valley and to enable people to access it more easily. This can be achieved by;

- Improving the quality of existing open space through improved management and maintenance regimes - to shared standards throughout the future WVRP area - and through capital investment.
- Increasing the amount of publicly accessible open space within the Wandle Valley and surrounding areas by opening up areas currently closed to the public and linking existing open spaces with green corridors.
- The creation of new public open space through development policies.
- Improving physical connections and removing barriers to access to the open spaces along, across and into the river valley, creating gateways into the regional park, by creating access routes through and around industrial estates and housing developments, and improving routes across barriers such as busy roads and train tracks.
- Improving signage and wayfinding to enable access to and movement within the valley.



Access to Nature

To improve visual and physical access to nature for visitors and local residents through;

- Better identifying and protecting existing natural resources within the valley .
- Expanding the existing natural resource by re-introducing some of the 'lost' natural character of the valley; de-canalising and naturalising river banks, habitat creation, species re-introduction, and improved management regimes of areas of the river and its surrounding landscapes.
- Developing public facilities and activities which encourage public understanding and engagement with the natural resources of the Wandle Valley.



Managing Flood Risk and Urban Heat Island

To utilise the open space network to help minimise flood risk and reduce the impact of the 'heat island effect' through;

- Increasing flood storage capacity through increased open space provision within the flood zone, and the de-canalisation of sections of the river.
- Reducing water run off by promoting the installation of green roofs and sustainable urban drainage through development policies and tree lined streets, and routes into the green valley.
- Changing management regimes of amenity open space to cope with increased drought conditions and create greater areas of tree cover, and natural plantscapes to provide shade and combat the 'heat island effect'.



Making Connections

To improve connections into and between open space within the area, helping to make the Wandle Valley into an integrated network of green space which is easy and enjoyable to access and to move around;

- Improving connections between public transport and open spaces, to enable greater numbers to access the open spaces within the future Regional Park and surrounding area.
- Improving the network of cycle routes used by visitors and commuters within the Wandle Valley to improve access and promote sustainable transport.
- Building upon and expanding existing walking routes and trails to and along the valley – including the ambition for the Wandle Trail to be recognised as a strategic walking route for London.
- Improved pedestrian and cycling connections through and around large-scale industrial estates which currently act as a significant barrier to access.

Area Strategy – Objectives



Enhanced Visitor Offer and Local Distinctiveness

To build upon the unique identity and heritage of the Wandle Valley with the particular mix of natural landscape and industrial history which makes up much of its character;

- Developing the visitor offer across the Wandle Valley as an integral part of the creation of the Regional Park - making the Wandle a place that people from across London and beyond will recognise and travel to for a day out.
- Improving existing visitor facilities, amenities and heritage features - which include water mills, city farms, historic houses and associated landscapes, nature reserves and many more - and improving their associated branding and publicity.
- Work with existing local organisations to encourage local people to access the landscape and heritage, by maximising the use of current facilities and introducing new activities within the existing open space network.
- Offering activities such as festivals and open days to encourage a sense of place, ownership and shared local identity.

Healthy Communities

To ensure that the green space network within the area supports the development of healthy communities around it through;

- Improving existing and creating new playspace and sports facilities within the open space network.
- Improving the access to the Wandle Valley for healthy recreational opportunities in partnership with local health providers, including led walks, gardening for fitness, cycle training and outdoor rehabilitation programmes.
- Maximising the opportunity for the Wandle to become a focal point for sustainable urban neighbourhoods with opportunities for people to learn about sustainable living options.

Productive Landscapes

To build upon the existing presence and previous heritage of productive landscapes within the Wandle Valley;

- Improving the quality and facilities of existing allotments sites in the Wandle Valley.
- Creating new food growing opportunities, allotment sites and community gardens within the open space network.
- Looking for opportunities to extend the provision by exploring possibilities for creating other productive landscapes including coppicing, fish ponds, watercress beds and other traditional land-based activities.

Regional Park

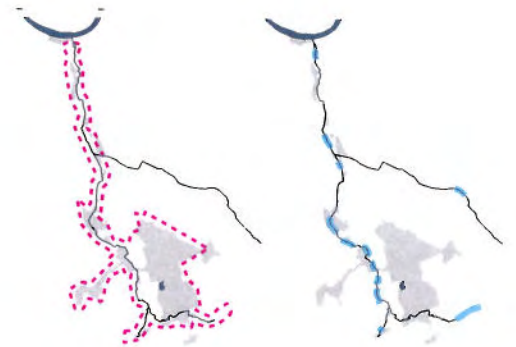
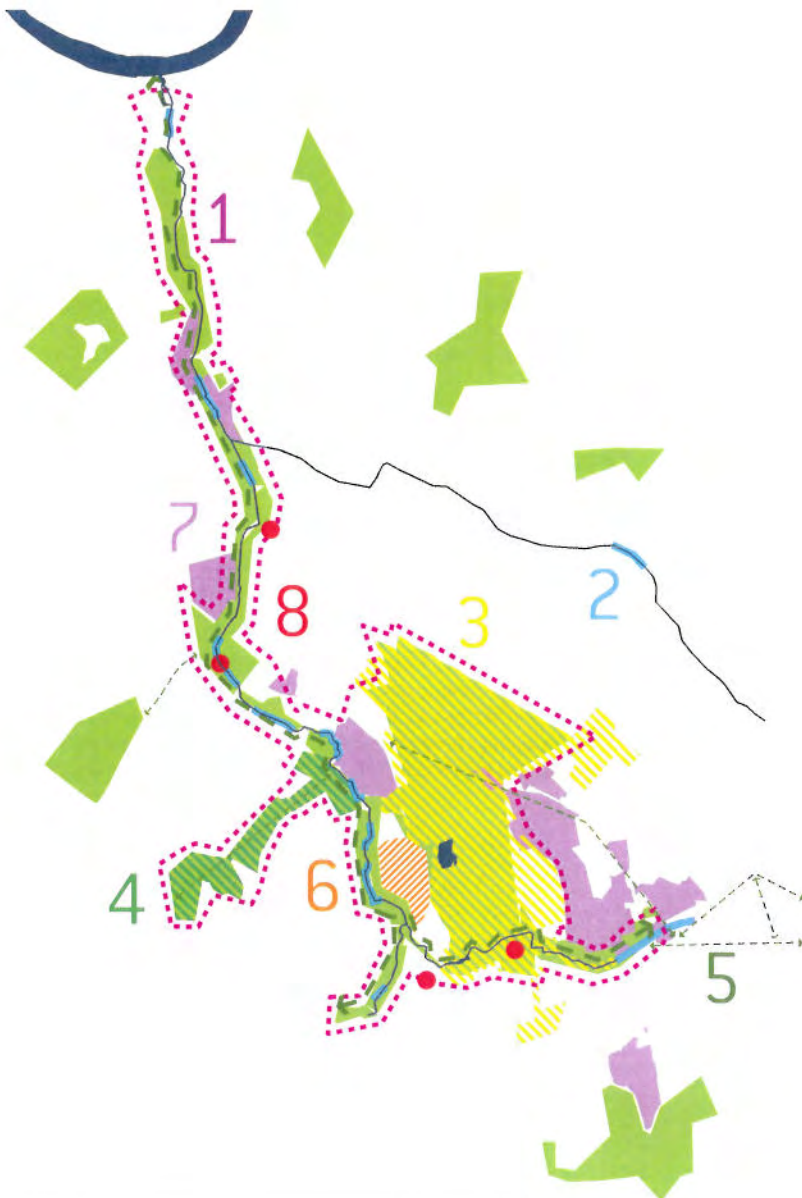
The creation of the regional park for the Wandle Valley is central to the successful delivery of the Green Grid Objectives - acting as a catalyst for improvement and change. Its creation would help to enable the improved management and maintenance of open spaces within the area, and the delivery of projects to transform the quality of its landscapes and their accessibility - helping to make the Wandle Valley into a resource and destination at a regional scale.

The successful development of a regional park should include:

- Continued partnership working between the local authorities, other landowners and statutory bodies.
- The continued involvement of the community and voluntary organisations in the decision making processes.
- The development of a robust and fit for purpose governance structure to manage the future regional park for the long-term benefit of Londoners.

Area Strategy – Opportunities

A number of strategic opportunities have been identified within the Wandle Valley Green Grid area. These are significant opportunities - rooted in real or aspirational projects which are spatially specific - which have the potential to deliver the Area Vision and Objectives described on previous pages.



1

2

To develop a framework for the creation of a new Regional Park - as a vehicle to improve the management, funding and identity of open space within the Wandle Valley.

To improve the ecological and environmental value of the River Wandle through restoration projects, habitat enhancement and species re-introduction, and projects which seek to mitigate flood risk.

Area Strategy – Opportunities



3
To create a 200 hectare Country Park at Beddington Farmlands through the restoration of land used for gravel extraction and landfill tipping, linking Beddington Park with Mitcham Common.

4
To create a District Park through the unification of Poulter Park, Revesby Wood, Middleton Open Space, St Helier Open Space, and Rose Hill Park.

5
To create improved cycle and pedestrian connections to the Wandle Valley and Wandle Trail from the surrounding areas - through significant open spaces such as the proposed District Park, and a suite of projects connecting the River Wandle to Croydon Town Centre.

6
To develop an exemplar sustainable neighbourhood at Hackbridge - with low carbon development closely integrated with the River Wandle through improved cycle and pedestrian connections, and energy generation associated with river restoration projects.

7
To develop a mutually beneficial relationship between the open space network and industrial space within the Wandle Valley - from facilitating access improvements through to nurturing a unique sense of place which can help to enliven and enrich the identity of the Regional Park.

8
To capitalise on the area's abundance of heritage assets including watermills, mill races, Merton Priory, and Merton Abbey Mills, to develop the Regional Park as a landscape rich in historical character.



Viridor waste Site at Beddington Farmlands



Project Identification

This section details all WVG project suggestions: public authority projects, interventions delivered through development, and site acquisitions. Each project is mapped, described within a rolling project list and assessed against this area's strategic opportunities.

Project Identification – Clusters

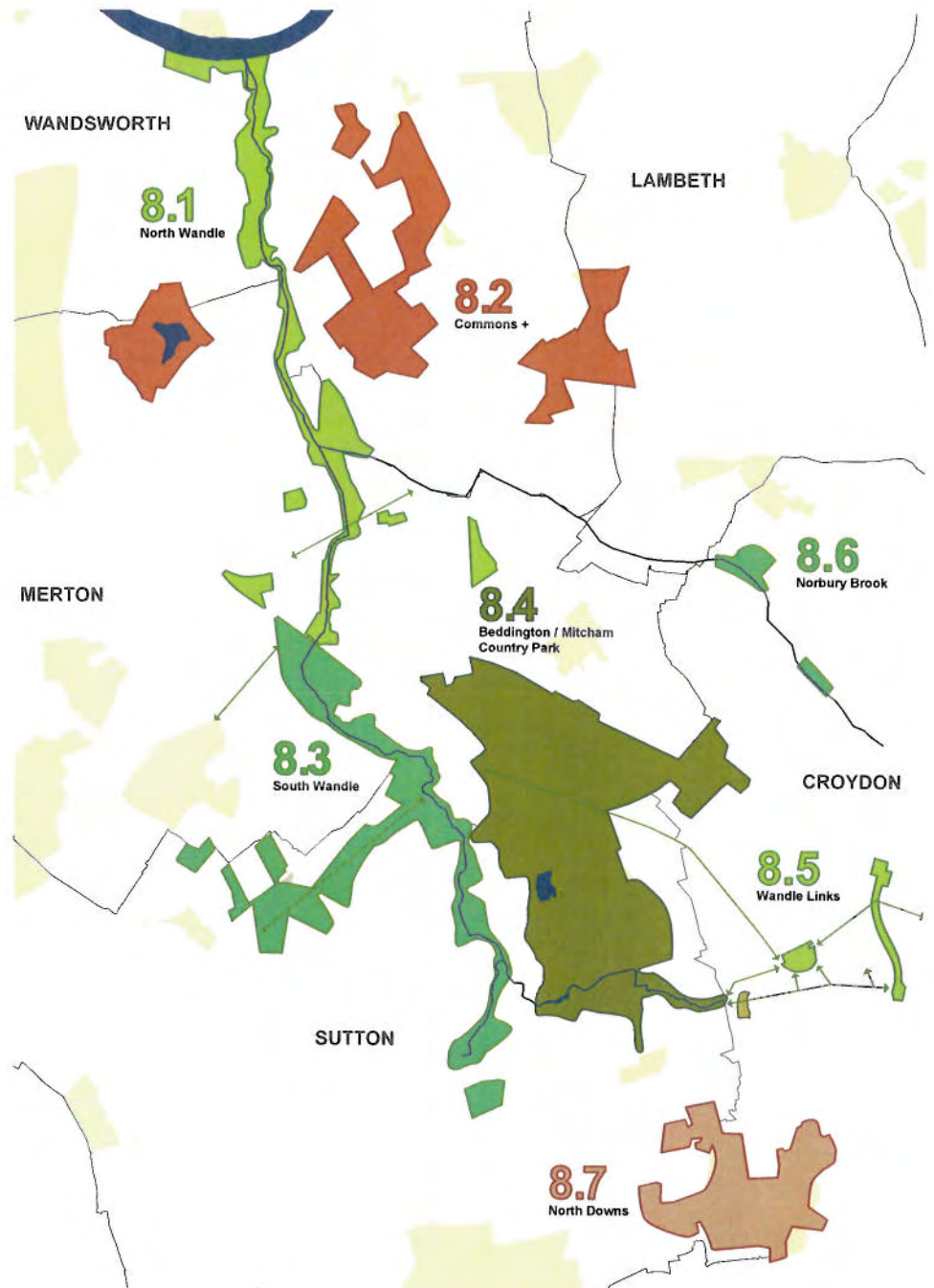
Clusters

The figure on the right shows an overview of the entire project mapping for the Wandle Valley Green Grid Area and identifies seven character areas – defined to better understand the different contexts within which the projects identified over the following pages are operating. The character areas recognise that thematic contexts of scale and landscape often cut across lines of project ownerships or borough boundaries. The character areas inform the development of project clusters - grouping projects that are either related in terms of geographic proximity, landscape character or where one cluster becomes the parent project of a number of smaller projects. Projects within clusters can be implemented independently, but have an overarching strategy or relationship that should deliver an interconnected vision.

The identified clusters - which structure the project mapping that follows - are listed below and described on the opposite page:

- 8.1 North Wandle
- 8.2 Commons +
- 8.3 South Wandle
- 8.4 Beddington / Mitcham Country Park
- 8.5 Wandle Links
- 8.6 Norbury Brook
- 8.7 North Downs

In addition, there are a number of projects or initiatives which encompass the whole of the Wandle Valley, or span across multiple project clusters. These 'Wandle-wide' projects are identified in the rolling projects list with the prefix 8.0.



Project Identification – Clusters



8.1 North Wandle

The north section of the Wandle threads together a rhythm of river valley green spaces interspersed with industrial sites. Rail crossings divide the valley into a series of communities consisting primarily of prewar terraces. As the Wandle meets the Thames, new residential developments are replacing industrial sites. Key projects aim to improve accessibility to and along the river, and substantial redevelopment at Merton Priory Park is planned.



8.2 Commons +

This east-west sequence of green spaces crossing the north-south axis of the Wandle are linked by the London Loop. The principle green spaces are enhanced by a diversity of other spaces and activities including cemeteries, golf clubs and sport centres. These green agglomerations, serving the surrounding communities of prewar terraces, could offer important connections to the Wandle Valley as part of the wider open space network.



8.3 South Wandle

The south section of the Wandle forms a near continuous green corridor between more substantial parklands. As with the north section of the river, these are interlaced with a sequence of industrial sites. River restoration projects are planned to improve ecology. A major sustainable regeneration project is planned for Hackbridge, with the potential to transform the facilities and the fabric of the neighbourhood bordering the river.



8.4 Beddington / Mitcham Country Park

The long-term project at Beddington Farmlands to restore operational land into a publicly accessible nature reserve will, by linking Beddington Park to Mitcham Common, form a major new country park at the base of the Wandle Valley. This project represents the most significant area of new parkland planned within the Valley. A major sustainable regeneration project is planned for the adjoining Hackbridge local centre.



8.5 Wandle Links

Croydon Metropolitan Centre is currently disconnected from the WVRP by industrial land, infrastructure, and poor cycle and pedestrian links. The Wandle Links cluster consists of a series of projects that will establish strong connections to the Wandle Valley, and extend green infrastructure into and beyond the heart of Croydon.



8.6 Norbury Brook

The Norbury Brook joins the river Wandle via the River Graveney at south Wimbledon. Within the area's network of terraced housing, much of the brook is canalised and inaccessible. The renovation of green spaces in the area seeks to improve community facilities and ecology with the naturalisation of the brook as a potential focal point.

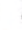



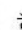





8.7 North Downs

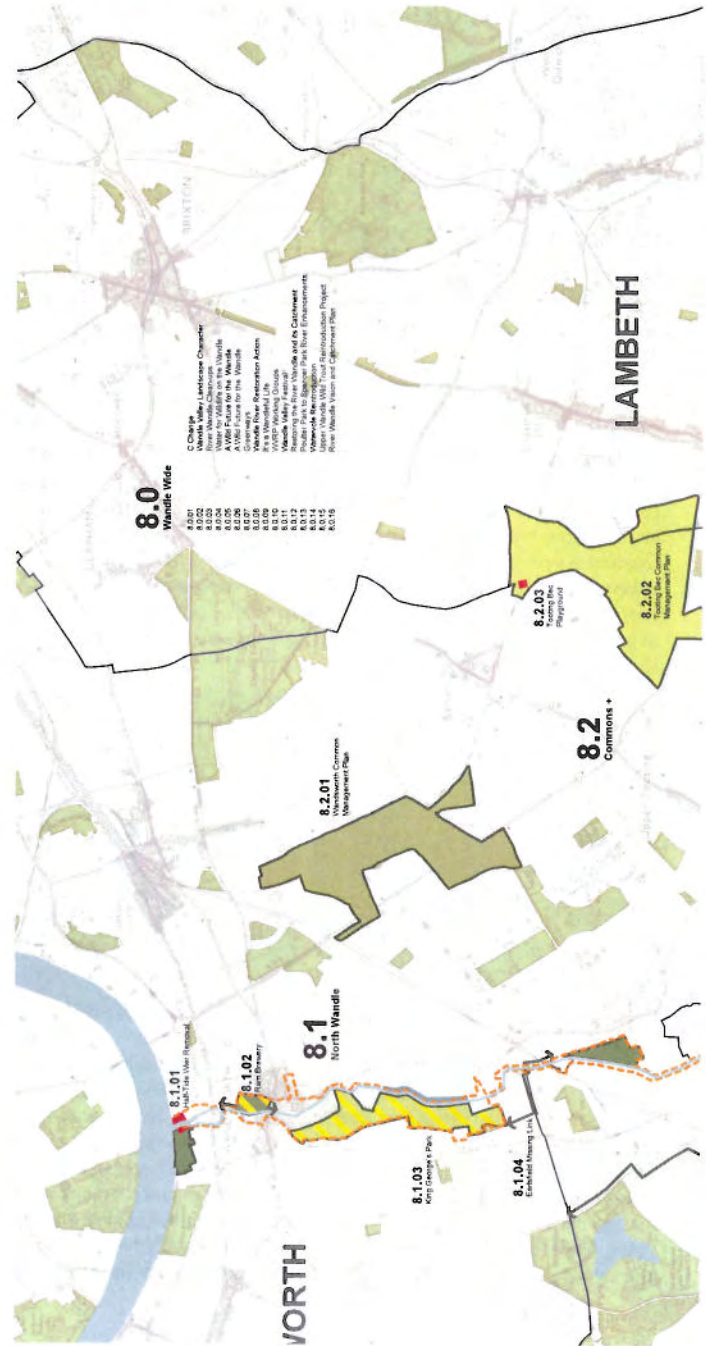
The North Downs sit on the rising land that defines the South edge of the Wandle Valley. The A23 cuts it in to the two equal halves of Roundshaw Park and Purley Way Playing Fields. Schools, allotments and sports grounds nestle around. Edges are defined by industry to the north, postwar housing and flats to the west, and semi-detached residential properties to east and south.

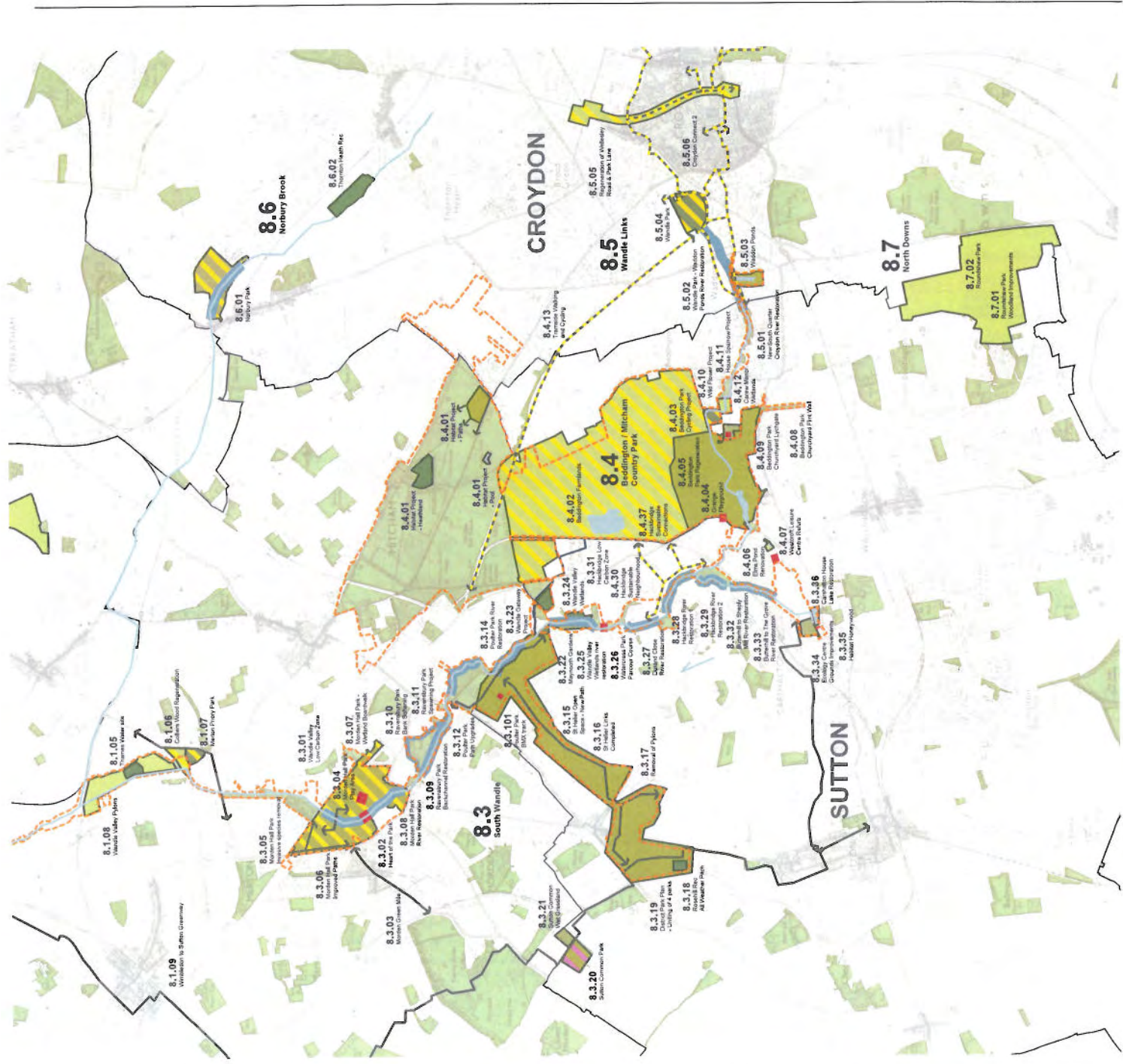
Aerial Photography: © Microsoft Corporation, © Collins Bartholomew LTD, © 2010 NAVTEQ

Project Identification – Projects Map

- Project Mapping**
-  Open space projects
 -  Phase one project
 -  Completed project
 -  Linking projects
 -  Phase one link
 -  Buildings and structures
 -  Regional park study
 - 2.1.03** Project code
 -  Related open space

Identified projects
 The Wandle Valley Framework is composed of a number of projects of various types including: open space improvements, open space creation, new access points to open spaces, habitat or riverine improvements, feasibility studies, and promotion projects.
 The following map illustrates the disposition of the projects in the framework area. This is followed by the rolling projects list, which provides a description of each project alongside delivery arrangements.





Project Identification – Rolling Projects List

| Project number | Project name | Strategic project | Borough / Locality | Project description | Next Steps |
|----------------|--|-------------------|---|---|--|
| 8.0 | Wandle Wide Projects | | | | |
| 8.0.01 | C-Change | | Wandle wide | C-Change aims to engage with citizens, practitioners and policy makers to facilitate changes in behaviour, land use and policy that will help to 'climate proof' our cities now and in the future. The project aims to mobilise behaviour change and to demonstrate practical open space responses to climate change adaptation and mitigation via two interrelated projects in the Wandle. Community engagement and behaviour change The project aims to engage communities about climate change and demonstrate how small changes in their everyday lives can make a difference to our climate in the future. Groundwork's Green Doctors will work in partnership with LB Merton in the Wandle Valley Low Carbon Zone to provide home energy advice and to support households to reduce CO2 emissions by 20%. The creation of an edible garden at the Acacia Intergenerational Centre provides a unique community space for growing, harvesting and cooking food and for learning about sustainable living. Volunteers will be recruited as Climate Change Champions who will work with a diverse range of people to help reduce their carbon footprint. | Delivery has begun. Additional match funding will continue to be sought. |
| 8.0.02 | Wandle Valley Landscape Character | | Wandle wide | Natural England led project to assess the landscape character of the Wandle Valley and express this through its 'natural signature'. This project contributes to enhancing distinctive local destinations through the guidance given in the document on conserving and enhancing the landscape character of the Wandle Valley through projects and landscape management. | |
| 8.0.03 | River Wandle Clean Ups | | Wandswoth, Merton, Sutton, Croydon | River cleanup events to remove litter from in-stream and the banks with community volunteers. The project is currently run voluntarily by Trustees of the Wandle Trust. | Currently occurs once a month, rotating between boroughs. |
| 8.0.04 | Water for Wildlife on the Wandle | | Upper Wandle (Wandle Park, Croydon to Morden Hall Park, Merton) River | Several sections of the Wandle in this stretch are in good ecological condition but remain fragmented and isolated from one another as a result of weirs, sluices, culverts and other barriers to wildlife movement such as areas of ecological degradation. | |
| 8.0.05 | A Wild Future for the Wandle (Upper Wandle (Wandle Park, Croydon to Morden Hall Park, Merton) | | Upper Wandle (Wandle Park, Croydon to Morden Hall Park, Merton) River | Several sections of the Wandle in this stretch are in good ecological condition but remain fragmented and isolated from one another as a result of weirs, sluices, culverts and other barriers to wildlife movement such as areas of ecological degradation. This project provided additional support for the larger VET funded project and shared objectives (see above). | |
| 8.0.06 | A Wild Future for the Wandle (Upper Wandle (Wandle Park, Croydon to Morden Hall Park, Merton) | | Upper Wandle (Wandle Park, Croydon to Morden Hall Park, Merton) River | Several sections of the Wandle in this stretch are in good ecological condition but remain fragmented and isolated from one another as a result of weirs, sluices, culverts and other barriers to wildlife movement such as areas of ecological degradation. River bank enhancements; improve marginal and emergent vegetation, in-stream deflectors or de-silting, barrier mitigation; reedbed creation, tree works, train and support local conservation volunteers in surveying and monitoring, management plan. | |
| 8.0.07 | Greenways | | Wandle wide | Network of walking and cycling routes connecting local people to green space and other local trip generators. SW Greenways - across the London boroughs of Merton, Sutton, Wandsworth, Richmond and Kingston. SE Greenways - Croydon, Bexley and Bromley. Project managed by Sustrans, funding provided through TfL's Greenways programme until March 2011. Network includes National Cycle Network (e.g. Wandle Trail) and other established local routes alongside longer term aspirations. | All SW & SE boroughs have identified the priority links within the Greenways network, and funding has been secured to progress sections of these links in 2010/11. From 2011/12 all borough Greenways schemes have to be progressed with LIP funding. Formally recognising the networks within Core Strategy and other planning documents is therefore a key aim. |
| 8.0.08 | Wandle River Restoration Action | | Wandle wide | Environment Agency led plan involving many partners to restore the River Wandle to its former natural state as far as practicable. Projects in all stages, delivery, development and aspirational. | |
| 8.0.09 | It's A Wandleful Life | | Merton, Wandsworth and Sutton | A Volunteer Programme for the Wandle, providing a structure to get involved in volunteering along the natural spaces along the Wandle, and a menu of volunteer activities and training opportunities. Groundwork London, The Wandle Trust and the Environment Agency leading development of access to the Wandle project (directed by Landscape & Biodiversity working group). | Application decision will be made in Sep 10. Project will begin in Nov 10 |
| 8.0.10 | WVRP Working Groups | | LB Croydon - LB Merton | Transport & Connectivity, Heritage & Culture, Recreation, Regeneration & Economy working groups would assist in taking forward project ideas and fundraising for implementation. | |
| 8.0.11 | Wandle Valley Festival | | Wandle wide | Ambition to secure a funded festival development and coordination post. | |
| 8.0.12 | Restoring the River Wandle and its Catchment | | Wandle wide | Various restoration projects are planned under the 'Restoring the River Wandle and its Catchment' scheme. The area involved focuses on the whole length of the River Wandle and its tributaries, including its winterbourne streams and wetlands within the catchment area, extending into the North Downs and so offering the opportunity to link up with the Downlands Green Grid. Current issues which the objectives and deliverables of the sub-projects address include: improving habitat for biodiversity; improving habitat for specific species, e.g. water vole and brown trout; restoring the river and associated tributaries out of culverts and ditches; improving water quality and in particular addressing levels of phosphate, sewage and road runoff; controlling, removing and managing invasive non-native species; improving and restoring flow levels which includes tackling overabstraction from the headwaters; ensuring development is sensitive to and enhances the river environment; improving access to and along the river and enhancing public enjoyment of the area for recreation; raising people's level of awareness, understanding and involvement in the river to secure its long-term stewardship; improving connectivity of the river both longitudinally and laterally and in particular ensuring barriers to fish passage are removed, and ensuring the river ecosystem is resilient to climate change effects and that any impacts can be fully mitigated. | A catchment plan will be undertaken by the Wandle Trust which will use a scientific basis to identify and prioritise what now needs to be done to improve the health of the river. Enjoyment of the river environment and stewardship by the local community will also be brought into this catchment plan through the extensive consultation of local stakeholders and the development of a common vision for the river environment. This will cost approximately £40,000. Implementation of the highlighted projects to achieve the catchment plan and realise a Wandle Vision will be costed on a case-by-case basis but prioritised according to their importance within the strategic plan. |
| 8.0.13 | Poulter Park to Spencer Park - River Enhancements | | Poulter Park to Spencer Park | Environment Agency, LB Sutton, LWT and Wandle Trust working on hard bank removal, in-channel enhancements, new access. | |
| 8.0.14 | A Water Vole Reintroduction Feasibility Study for the River Wandle | | Upper Wandle (Wandle Park, Croydon to Morden Hall Park, Merton) River | A study to assess the potential of the River Wandle between Wandle Park in Croydon and Morden Hall Park in Merton to support a self-sustaining population of water vole. In order to achieve this aim, the feasibility study 1. identified habitat patches which are currently suitable for water vole, 2. determined if there was sufficient interconnected habitat to support a self-sustaining water vole population and 3. identified priority areas for habitat restoration / creation. | |
| 8.0.15 | Upper Wandle Wild Trout reintroduction project | | LB Sutton | Reintroduction of urban adapted wild brown trout | |
| 8.0.16 | River Wandle Vision and Catchment Plan | | Croydon, Sutton, Merton, Wandsworth | A plan to detail what is needed to improve the ecological state of the River Wandle, taking a catchment approach. The vision will identify an ideal state for the river and the catchment plan will identify work that is needed to attain this state based on evidence-based scientific approach. Extensive consultation will be undertaken amongst stakeholders including the community to ensure widespread buy-in and | Add to existing funding |
| 8.1 | North Wandle | | | | |
| 8.1.01 | Wandle half-tide weir removal | | LB Wandsworth | Removal of the Wandle half-tide weir to re-establish the Wandle tidal creek to a more natural functioning. This will provide inter-tidal habitat creation and restoration, opportunities for which are particularly rare in London. Increasing access to nature; improving resilience to climate change, enhancing distinctive local destinations | The next steps include an updated feasibility study and options appraisal for removal of the weir |
| 8.1.02 | Ram Brewery | | LB Wandsworth | Redevelopment of the Ram Brewery which will provide 1.02 ha of high quality public realm, including two public open squares - each framed by the refurbished listed brewery buildings and riverside walkways. The development will also deliver significant benefits in terms of flood risk management, ecological habitat and riverside recreation: - 400 metres of replaced and refurbished flood defences, along with new access space for flood defence maintenance; - retreated flood defence line along the river corridor to create space for intertidal terracing used for wildlife habitat improvement, - raising the river wall level to increase protection from river flooding; - sustainable drainage infrastructure to decrease flows to the currently overloaded and combined sewer systems; - creation and improvement of tidal habitat through the creation of intertidal terraces; - new habitat creation and biodiversity enhancement landscaping, including roof gardens and nesting boxes - approximately 25,000 square feet of green roofs for ecological benefit across the site - a new riverside walkway with three pedestrian bridges to create walkways and connectivity to upstream and downstream parts of the river, continuing the Wandle Trail. | Following refusal of the planning application by the Secretary of State, it is anticipated that a revised planning application will be received by the end of 2010 / beginning of 2011. |

Project Identification – Rolling Projects List

| Project size (ha / m) | Project owner | Associated programmes | Identified delivery capacity Delivery agency | Total cost | Funding in place | Funding required | Outstanding funding bids | Private Sec sought | Funding notes | Date on site (assuming funding) | * Project stage | Long term management |
|-----------------------------|--|--|--|---|---|---|--------------------------|--------------------|--|---|-----------------|---|
| | Groundwork London | Wandle Low Carbon Zone | Groundwork London | 350,000 | 310,000 | 40,000 | | | EU Interreg IV BLDA – Low Carbon Zones, Others | 2009-2012 | 6 | |
| | Natural England | | | 25,000 | 25,000 | 25,000 | | | | 2009-2010 | 6 | |
| All Wandle | Wandle Trust | Access to Nature project with Groundwork | Volunteers | Aprox £6k per year with approx | No | Yes | Access to Nature | Yes | Ambition to secure funding to enable paid organisers | 2009-ongoing | 6 | Utility companies; Wandle Trust, EA, local authorities |
| 9290 m | London Wildlife Trust (Claire Shahbazian) | | London Wildlife Trust | 5000 plus volunteer time | yes, full 5,000 | £0 | £0 | £0 | Carillon Natural Habitats Fund | June 2009 - Feb 2010 | complete | |
| 9290 m | London Wildlife Trust (Claire Shahbazian) | | London Wildlife Trust | 350000 | £0 | £350,000 | £0 | £0 | | esap | seeking funding | |
| 9290 m | London Wildlife Trust (Claire Shahbazian) | | London Wildlife Trust | 80000 plus volunteer time | yes, full 5,000 | £0 | £0 | £0 | Veolia Environmental Trust with CTP from Thames Water rehabilitation fund | Oct 2009 - Sept 2011 | 6 | |
| | Sustrans / Transport for London | Connect2 | Sustrans, Transport for London – Greenways Programme | £1m - £2.5m per borough to deliver complete network | Approx £400k total across SE and SW boroughs. | Estimate - £500k across five boroughs per year. | | | Transport for London – Greenways Programme | 2007/8 - Ongoing | 6 | Respective boroughs. |
| | Environment Agency | | EAThames Water Landfill Tax funders | | | | | | EAThames Water Landfill Tax funders | 2009 - ongoing | | |
| | Groundwork London | Wandle Forum | Natural England, Groundwork London, Volunteers | 314,000 | £62,250 | 314,000 | Access to Nature | | Natural England, Thames Water, Groundwork London, Volunteers | 2010-2013 | | Ideally the project will be continued by the Wandl Valley Regional Park Forum |
| | WVRP working group | | Cross Borough, GLA | TBC | | TBC | | | Cross Borough, Wandle Festival Management Team | 2009 – to exist for as long as | | |
| | Cross Borough, Wandle Festival Management Team | | Wandle Festival Management Team: Cross Borough | 24,000 | | 24,000 | | | Funding sources to be identified. | 2009 – ongoing | | |
| | Focussing on Wandle Landscape and Biodiversity 18.5 km of river but involving a potential 20,000 ha catchment area | | Various organisations will deliver the sub-projects associated with restoring the River Wandle and its catchment. Sub-projects will mostly be delivered in partnership between different organisations and will frequently involve local volunteers. Partner organisations involved include: Environment Agency; Wandle Trust; London Wildlife Trust; National Trust; Metropolitan Public Gardens Association; Groundwork London; LB Croydon; LB Wandsworth; LB Sutton; LB Merton; Natural England; Thames Water; Mitcham Common Conservators; Friends of Beddington Park. | > £2.5m (possibly £350,000 > £10m) | | £1,000,000 * | | | Confirmed funding: Environment Agency, Thames Water Habitat Fund, LB Sutton, LB Merton, LB Croydon, LB Wandsworth; Veolia; Interreg IIC; London Wildlife Trust; Wandle Trust; and others. Potential sources of additional funding: BIG Lottery Access to Nature, Landfill Tax Awards, EU LIFE, Local Authorities, Contributions in kind from Wandle Trust, London Wildlife Trust and National Trust volunteers | 2010-2027 in line with Water Framework Directive targets. | | Various through partnership working and according to sub-project |
| | EA / LB Sutton / LWT / Wandle Trust | | Vindor | | | TBC | | | Vindor | 2009-2011 | 6 | |
| 9290 km | London Wildlife Trust (Claire Shahbazian) | | London Wildlife Trust | 58600 plus volunteer time | yes, full 58600 | £0 | £0 | £0 | Aggregates Levy Sustainability Fund | Dec 2008 - March 2009 | complete | |
| 400 km | Wandle Trust (Bella Davies) | | | < £50k | | | | | Landfill (Vindor) Thames Water Settlement EA Wandle Piscators | | | |
| whole catchment (20,000 Ha) | Wandle Trust (Bella Davies) | | Wandle Trust | £50,000 some | | TBC | | £15,000 | | | | Wandle Trust |
| 120 m | LB Wandsworth (Dave Clark / Steve Kempster / Valerie Selby) | Restoration of the River Wandle | LB Wandsworth | Estimated total cost = L | £350,000 | £2m for weir gate removal | | | Funding in place so far: £100k - Environment Agency & £250k - WBC via S106 agreement. | | 2 | Following removal of the weir, no further management will be needed. |
| | LB Wandsworth (Dave Clark) / Environment Agency (Ruth Hanniffy) | | | | | | | | | | | |

* Project stage: 0 = notional, 1 = scoping / briefing, 2 = feasibility study, 3 = outline designs, 4 = detailed designs, 5 = tender, 6 = implementation, 7 = management plans

Project Identification – Rolling Projects List

| Project number | Project name | Strategic project | Borough / Locality | Project description | Next Steps |
|----------------|---|-------------------|--------------------------|--|--|
| 8.1.03 | King George's Park management plan | | LB Wandsworth | The creation of a Management Plan for King George's Park to identify future landscape and facility enhancements. The Management Plan would identify landscape enhancements, including, river restoration with bank contouring and reed bed flood catchment areas creating improvement in public access to the nature and habitats associated with the River Wandie. creation of additional allotment space, restoration of the original layout in the north of the park closest to Wandsworth Town Centre with new ornamental planting, improvement of sports provision, with improved tennis courts, changing rooms, and leisure centre redevelopment, additional play provision and improvements to walking and cycling links to, through and within the park. | Completion of brief, tendering to consultants and completion of plan with aim to submit for an application for Parks for People, HLF. Management Plan has just received confirmation of £50k funding through planning gain. |
| 8.1.04 | Earsfield Missing Link | | LB Wandsworth, LB Merton | This scheme will address a major barrier to the continuity of the Wandie Trail, part of the National Cycle Network. At present, travelling north from Plough Lane, the Trail follows the alignment of the river until Summerley Street. At this point access to the river is restricted by development. Pedestrian and cyclists are forced to continue to Gerrall Lane, before linking into Penwith Road and following residential roads to the King George's Park. This is particularly challenging for younger and less confident cyclists. Gerrall Lane is busy and narrow underneath the railway bridge adjacent to the station entrance. While the station does provide access to the Trail, a new link along the river would continue the quiet and traffic free nature of the route. The scheme would increase access to the river and surrounding nature, and improve sustainable travel connections. | In previous year's a range of designs have been put to the EA. The plan proposes an elevated pedestrian and cycle path over the river, for which overview designs have been completed. These have been rejected for a number of reasons, primarily encroachment of the buffer zone around the river, and the knock-on effect to water storage capacity in the event of flooding. These plans are still supported by the Borough and Sustrans, but need to be re-visited and new contact with the EA established. |
| 8.1.05 | Thames Water site - conversion to park (Thames Water Colliers Wood, Bygrove Road Tanks) | | LB Merton | The former Thames Water storm tanks are remnants of the Wandie Valley Sewage works. The northern half of the site is now Wandie Valley Nature Park, however the concrete tanks remain next to the Wandie at Bygrove Rd. There is scope to reinterpret the industrial landscape as part of the WVG (like the dock in Thames Barrier Park). The tanks could accommodate ball courts, climbing walls, a cafe, skate park and open up access to the east side of the Wandie into Wandie Park which is currently restricted. | Remediation of site needed. |
| 8.1.06 | Colliers Wood Regeneration | | LB Merton | Colliers Wood is designated as one of the GLA's Area for Intensification and has recently been re-designated in Merton's LDF as a Town Centre. The Council is now challenged with turning 3 out of town retail destinations into one coherent town centre that will provide new jobs and housing in Colliers Wood. Colliers Wood has a rich heritage with Merton Abbey Mills and Merton Priory. The Council wish to promote the heritage of the River Wandie in a masterplan for the area. Colliers' Wood also lies within the Wandie Valley Flood Zone. The masterplan will seek to create new additional green spaces to act as flood storage capacity for the area. There is potential for Colliers Wood to become the new town at the Heart of the Wandie Valley Park. The first step in transforming Colliers Wood is redeveloping the Colliers Wood Tower. The Council are in discussion with the owner and expect a new planning application in Autumn 2010. | LDF Core Strategy adoption (Feb 2011) Masterplan production with HCA and GLA - Summer 2011? |
| 8.1.07 | Merton Priory Park | | LB Merton | Merton Priory Park is a significant new green space which could be created through the town centre regeneration. Located between Sainbury's and Priory Retail Park, and housing the remains of Merton Priory, the Park would be at the heart of the new town centre (subject to negotiation and redevelopment/intensification of the Sainbury's/Priory Retail/Tower sites). The creation of this park would represent a major contribution to the open space network - solving an existing 'missing link' along the Wandie Valley. | |
| 8.1.08 | Wandle Valley Pylons | | LB Merton | The presence of Pylons in the Merton stretch of the Valley are considered a blight on the environment and also hinder development and regeneration activity in Colliers' Wood. (GLA support would assist as part of delivering the development opportunities in the Area for Intensification) The Pylons may not need to be buried (like the Olympic Canal), but could be buried in a cut-cover method under the riverside path (as is done on the Regents Canal / Limehouse Cut / Grand Union Canal / Lee Navigation). | Feasibility study required - to include exploration of potential for renewable energy generation from heat/water. |
| 8.1.09 | Wimbledon to Sutton Greenway | | LB Merton & LB Sutton | This pedestrian and cycle route connects two of south London major town centres, and numerous green spaces. The route follows the rail side path between Wimbledon and Raynes park before heading south through a number of green spaces, including Morden Park and connecting into residential roads around Sutton town centre. TfL Greenways funding has already provided new or upgraded paths within Joseph Hood Recreation Ground, Morden Park, Elm Road Rec Ground, Glenhorne Gardens and Roseshill Recreation Ground. Improvements to a number of junctions and signing is required for the length of the route. | Priority Greenway Links to Wandie Trail not currently implemented - Thames Path east and west / link to Mitcham Common and tram side path / St Helier open space / Avenue Verte link to south and NCR20 / parallel route between Wimbledon and Sutton. |
| 8.2 | Commons + | | | | |
| 8.2.01 | Wandsworth Common Management Plan | | LB Wandsworth | The aim of the project is to develop and agree a clear and realistic framework for maintaining, managing and improving the Common, taking local peoples views into account in developing policies and practices. The management plan will provide a coordinated approach to the management of the Common and a clear vision for the future. | Completion of brief, tendering to consultants and completion of plan. |
| 8.2.02 | Tooting Bec Common Management Plan | | LB Wandsworth | The aim of the project is to develop and agree a clear and realistic framework for maintaining, managing and improving the Common, taking local peoples views into account in developing policies and practices. The management plan will provide a coordinated approach to the management of the Common and a clear vision for the future. | Completion of brief, tendering to consultants and completion of plan. |
| 8.2.03 | Tooting Bec playground | | LB Wandsworth | The development of a natural play space within boundary of the existing conventional play space. This will provide children and young people with a challenging and ever evolving place to play where the majority of play features will be created using natural materials. The play space will enhance the common and aims to support the local habitat for wildlife and plants. | A design consultant has been appointed and a design is expected by mid July for further consultation. Due to its location the project is likely to require Secretary of State planning permission in addition to local planning permission. Once permissions have been granted a tender process will be followed to appoint contractors. |
| 8.3 | South Wandie | | | | |
| 8.3.01 | Wandle Valley Low Carbon Zone - Groundwork | | LB Merton | LB Merton leading a carbon reduction programme with retro-fitting and community engagement. Includes Groundwork's Green Doctor programme and Sustainable Merton Managing flood risk, urban heat or climate change contributing to green skills or training. | |
| 8.3.02 | Heart of The Park | | LB Merton | The Livinggreen.eu Heart of the Park project at Morden Hall Park will renovate the 19th century stable yard to become the heart of the park and centre for sustainable building renovation and green living. The project will also conserve the remaining waterwheel and install a micro-hydro turbine in the river Wandie which flows through the park. In addition, the project will deliver a programme of HLF-funded community engagement activities, events and new volunteer opportunities, led by a Community Projects Manager. National Trust is one of 8 partners in the Livinggreen.eu project, which is part-financed by the European Union through INTERREG IVB. Five heritage buildings in five countries in north west Europe will be renovated sustainably as part of the project. These renovated buildings will function as demonstration buildings and accommodate sustainability centres serving as meeting points and facilities for bringing together different stakeholders, engaged in the process of making cities, in particular existing built environment, more sustainable. | First phase of construction begins August 2010. |
| 8.3.03 | Morden Green Mile | | LB Merton | LB Merton has set up a project called more Morden to regenerate Morden Town Centre. Central to this is changing the way traffic moves through the town centre. In our vision consultation, residents cherished Morden's green spaces, but disliked the barren, noisy and over-wide road that runs through the town centre (part of the TLRN / TFL). The Morden Green Mile is a project which will use tree planting to create a green urban boulevard on London Road, acting as a green link between Morden Hall Park and Morden Park. | Masterplan 2010 - Trees for streets / Mayor's tree fund / TFL |
| 8.3.04 | Morden Hall Park - Play Area | | LB Merton | We are creating a natural play area for children. To achieve this we have applied for landfill tax credits and achieved some section 106 funding which with match-funding we hope to deliver a play area costing about £140,000. The concept for the space is inspired by the insects that inhabit the meadow and woodland, bringing children into contact with them and giving them an understanding of how they live by immersing them in a Lilliputian play world where they can imagine life from an insect's perspective. The location is envisaged as being between the two eastern-most streams of the Wandie, south of the tramlink and north of the white bridge. We have undertaken a consultation exercise with a local school to ensure children and the community engage with the play area from a formative stage and it is fit for purpose. | Architect / Project Manager appointed. Awaiting outcome of fundraising bids and planning consent. Appointment of a contractor to follow with the hope to complete work and open in the Summer of 2011. |
| 8.3.05 | Morden Hall Park - Invasive species removal | | LB Merton | Project to remove invasive species from Morden Hall Park and other river properties owned by the NT. The initiative involves 3 working parties from the fishing club and monthly volunteer groups (April to October), as well as the big put in watermeads in June. The project aims to increase access to nature, enhance distinctive local destinations, promote healthy living and contribute to green skills or training. | |
| 8.3.06 | Morden Hall Park - Improved paths | | LB Merton | Two miles of multi-use paths have been installed, completing a figure-of-eight around the park. | |
| 8.3.07 | Morden Hall Park - Wetland boardwalks | | LB Merton | Project to reconnect the north and south sides of the park via a raised Boardwalk through the Wetlands. Morden Hall Park has 125 acres of grounds, including rose gardens, parkland, and historic buildings. There are many paths for visitors, but currently it is not possible to do a circular walk round the Park. The boardwalk will create a 2.5 mile circular trail around the park, allowing visitors access to get close to nature with viewing platforms and dipping areas. The project will: • Create improved yet controlled access to the wetland area - the height of the Boardwalk will enable visitors to see deep into the Wetlands area, and the flow of water under the Boardwalk will bring birds literally under the feet of visitors. • Create a teaching area in the wetland area which will be more accessible to schools on the South side of the park including a site for safe and responsible pond dipping activities • Provide opportunities for local school children to get involved in the design and interpretation of the board walk. | |

Project Identification – Rolling Projects List

| Project size (ha / m) | Project owner | Associated programmes | Identified delivery capacity Delivery agency | Total cost | Funding in place | Funding required | Outstanding funding bids | Private Sec sought | Funding notes | Date on site (assuming funding) | * Stage | Long term management | |
|---|---|---|--|---|--|-------------------------------|-----------------------------|---|--|--|---------|---|---|
| 24 ha | LB Wandsworth (Valerie Selby) | | Wandsworth Borough Council Parks Department | < £50k | £50k | | | | £50k secured through S106 for Westfield House site | 2010-2011 | 7 | Subject to suggestions within Management Plan. | |
| | Sustrans (Tom Sharland) | TIL Greenways | Sustrans / LB Wandsworth / Environment Agency | £1m - £2.5m | No | Yes | None at present | No S106 funding available at present time | Small level of funding required to revisit feasibility and agree a design option (if possible) with the EA. | 2012/13 - assuming agreement from EA and funding in place. | | Costs are not know at this stage, feasibility study would make this clearer. | |
| | LB Merton (Paul McGarry) | | Thames Water (?) | M | | | | | | | 3 | | |
| | LB Merton (Paul McGarry) | GLA - Area for Intensification | London Borough of Merton, GLA, EnvAgency | Masterplan: £50k N £250k Implementation: > £10m | | | Y - (LBMHCA for Masterplan) | | Committed - LBM Regeneration Capital (c80k) | | | 1 | |
| | LB Merton (Paul McGarry) | | London Borough of Merton / GLA / Land Owners > £10m / TFL / Env Agency | | | | | | | | | 1 | |
| | LB Merton (Paul McGarry) | | GLA / National Grid | Feasibility (S), Implementation (XL-XXL) | | | | | | | | 0 | |
| 10.5 km | Sustrans (Tom Sharland) | | Sustrans / LB Merton / LB Sutton | CRISP study estimated total cost of £1.04m | To date approx £540k spent on route since 2006/7. £50k secured for | £450k (estimate) | | | Funding to date has been through TIL's Greenways programme, from 2011/12 boroughs with have to progress greenways scheme through LIPs. | 2012 /13. | | Sustrans and partner borough - would like to see this adopted in a similar fasion to the NCN. | |
| 73 ha | LB Wandsworth (Valerie Selby) | | Wandsworth Borough Council Parks Department | < £50k | | £50K | | | | | 1 | Subject to suggestions within Management Plan. | |
| 92 ha | LB Wandsworth (Valerie Selby) | | Wandsworth Borough Council Parks Department | < £50k | | £50K | | | | | 1 | Subject to suggestions within Management Plan. | |
| TBC | LB Wandsworth (Jenny Hoyle / Jo Robinson) | Playbuilder - DCFS play space development programme | Wandsworth Council | £288,000 | £288,000 | £0 | £0 | £0 | Project funded solely by Wandsworth Council. | | | This is dependent on planning permission. | This will be explored whilst the design is created. |
| | LB Merton | | | 500,000 | 275,000 | 290,000 plus costs for retro- | | | LDALB Merton EU Interreg IV B. Metropolitan homes | 2009-2012 | 6 | | |
| 0.8 ha | National Trust | | National Trust | £2.5 million | £2.1 million | £400,000 | 17/8/10 | | Funding secured from National Trust, Heritage Lottery Fund, Interreg IVB, Landfill Tax Credits. Fundraising is ongoing to meet £400k shortfall | 2010-2012 | | | |
| | LB Merton | | London Borough of Merton / TFL | £50k - £250k | | | | | | | | 2 | |
| Possibly 400 m2, dependent on funds available | National Trust | | | £144K | £8K plus internal match funding for bids | £136K | | | £8k S106 funding secured and awaiting outcome of funding bids for the remainder. | 2011 | | Minimal and met by the property | |
| 50 ha | National Trust | | National Trust | £300 | £300 | | | | Paid for from NT operating budgets on going - eg skips and waders. | | | | |
| 250 m | National Trust | | National Trust | 320,000 | | 320,000 | | | Access to Nature, Landfill funding in process of being secured. | 2010-2011 | 4 | | |

* Project stage: 0 = notional, 1 = scoping / briefing, 2 = feasibility study, 3 = outline designs, 4 = detailed designs, 5 = tender, 6 = implementation, 7 = management plans

Project Identification – Rolling Projects List

Complete Phase one

| Project number | Project name | Strategic project | Borough / Locality | Project description | Next Steps |
|----------------|--|-------------------|--------------------|--|--|
| 8.3.08 | Morden Hall River Restoration | | LB Merton | Restore more natural channel with range of in channel features and backwaters, also new small side channel to avoid garden area which will become formalised. Full river restoration | |
| 8.3.09 | Ravensbury Park, Backchannel River Restoration | | LB Merton | small backchannel around sluice gate and weir on the Wandie. Improve stream habitat through weed planting, coir rolls, flow deflector and tree thinning | Flow deflectors recently in place. Next steps = install coir rolls, plant weed and monitor |
| 8.3.10 | Ravensbury Park, Bank softening | | LB Merton | Restoration of the main channel within Ravensbury Park. The aims of the project are: - To enhance the ecological value of the Wandie by undertaking bank naturalisation and enhancements, such as toe board removal, bank reprofiling, back water creation and installing planted coir rolls - This will enhance the in stream ecology and provide potential habitat for water voles. | Develop ideas with Friends of Ravensbury Park, Wandie Trust, Environment Agency and London Wildlife Trust |
| 8.3.11 | Ravensbury Park spawning maximisation project | | LB Merton | Tree thinning, weed planting plus flow deflectors now being installed to improve spawning habitat for barbel, chub, dace and trout | |
| 8.3.12 | Poulter Park - riverside path upgrade / cycle route | | LB Sutton | Long-term aspiration to convert the footpath along the river into a cycle route as part of the London Cycle Network. The Borough has been working with Sustrans and this route is also identified as a Greenways Route and National Cycle route 20. There is no funding available this year 2019/20 | Awaiting a funding opportunity. Some political opposition to implementation due to potential use by motorcycles. |
| 8.3.13 | Poulter Park - BMX track | | LB Sutton | BMX track to be installed. Funded from public realm £20k in total | |
| 8.3.14 | Poulter Park River Restoration | | LB Sutton | The banks of the river in this location are reinforced with concrete slabs. Some sections have eroded and are in poor condition. There is a need to improve marginal habitats to enable the spread of future water voles released in Watermeads. Bank naturalisation and re-profiling, replacing and re-surfacing adjacent footpaths. | |
| 8.3.15 | St Helier Open Space - new N-S paths | | LB Sutton | Approx 500 metres of path needed to provide improved north/south connections from car park. (Good existing paths east/west.) | |
| 8.3.16 | St Helier Open Space - completed links | | LB Sutton | Work in St Helier and Poulter to link the series of green spaces as an effective green chain through investment in paths and associated amenities (including skateboard park) - undertaken by Groundwork Merton 4-5 years ago. | |
| 8.3.17 | Removal of Pylons | | LB Sutton | Aspiration to remove electricity pylons in Poulter-St Helier-Rosehill | |
| 8.3.18 | Rosehill Rec - All-weather pitch | | LB Sutton | Redevelopment of the existing all weather pitch with a funding leasee | |
| 8.3.19 | District Park Plan - Uniting of 4 parks | | LB Sutton | Ambition for a series of parks - Poulter Park, Reevesby Wood, Middleton Open Space, St Helier Open Space, and Rose Hill Park - to become a District Park with a single management plan, as set out in LB Sutton's Open Space Strategy | LB Sutton do not currently have the resources to progress this / do the management plan. |
| 8.3.20 | Sutton Common Park - Recent Investment Inc. tennis courts, playground, paths etc | | LB Sutton | A programme of investment including refurbishing the tennis court, playground and bowling green pavilion, upgrade to footpath through centre of park upgraded, securing park with new railings, new signage at entrances. Details as follows: - Resurfacing the tennis courts. (£23k) - Park fenced to improve security. Park now locked at dusk as requested by the Friends Group and local residents. (£42k) - Children's playground refurbished - partly with Playbuilder funding (£50k) - New wildlife pond created on the lower field and a wildflower meadow to be planted to attract butterflies in Spring. (£26k) - New path through the lower field to allow all year round access for walking - New welcome to the park sign which also advertises the bowling green. (£1400) - The bowls pavilion has been repaired and redecorated internally. (£15k) | Traffic and Transport Team currently carrying out consultation as to whether the public footpath which runs through the middle of the park should be shared by pedestrians and bicycles. |
| 8.3.21 | Sutton Common Park Wet Grassland | | LB Sutton | Sutton Common Paddock is currently managed by Sutton's Parks department as amenity grassland for informal recreation. The site is waterlogged for large parts of the year and the value of the site for biodiversity and public use is limited. The project aims to improve the biodiversity on site by creating a wet meadow area and a willow / alder area, as well as an interpretation board to inform site users about the purpose of the newly created areas. The project involves landscaping the area to create a scrape of around 1000m ² for the creation of a permanent wet meadow and preparing the ground to seed a native wet meadow seed mix. Most of the spoil from the works will be used to create landscape features on site. The deepest areas of the created scrape will have potential to be permanently waterlogged and establish a marsh habitat. The whole site is 1.6ha and the remaining areas will be, initially, left to undergo natural development to a wet meadow. The project proposes the design and installation of a site interpretation board to inform local site users about the new nature area, and species that will potentially be attracted to the site. The wider project aims to improve access to Sutton Common Paddock via a formal gravel path. The site is generally conserved by the public to be too wet for any use, and | The project will contribute to the national target to attempt re-establish 500ha of lowland meadow of wildlife value, as well as the regional target to create an additional 20ha of meadows and pastures. It will also contribute to the local target to allow 1 area of amenity grassland to develop into a meadow (or flowery lawn with wildlife value). The long term project aim is to establish a wet meadow over at least 1.4ha that will accord with an NVC classification as appropriate to the initial conditions and species mix. |
| 8.3.22 | Maynooth Gardens | | LB Sutton | Invasive weed removal and access | Identify resources to develop further. Capital cost will not be high, but public consultation is probably necessary. |
| 8.3.23 | Wandle Gateway Project | | LB Sutton | LB Sutton working with Global to Local and local partners to deliver improvements in access/interpretation of the River Wandle in LB Sutton. Also proposing branding/logos for WWRP. | Final design brief and tendering |
| 8.3.24 | Wandle Valley Wetland Water vole habitat creation and access improvements | | LB Sutton | Two nature reserves - Spencer Road Wetland and Wandle Valley Wetland - have been earmarked for water vole project. (Spencer Road is now finished.) Both nature reserves are not currently accessible to the public and therefore represent potential undisturbed water vole release sites. Access will depend on available revenue funding. Spencer Road wetland leased to LWT at present. Wandle Valley Wetland leased to LBS, and fenced in to stop fly tipping. If long term maintenance budget is found they could be opened to the public. | Identify resources to develop further. |
| 8.3.25 | Wandle Valley Wetlands River Restoration | | LB Sutton | The Wandle in this location has sections of good marginal vegetation with other sections which remain over-shaded and degraded with toe boarding. The Wandle Valley wetlands are a section of land on the bed of the river which could be enhanced with the creation of interlinked wetland areas, acting as backwaters to the Wandle. This would have multiple benefits, particularly with regard to fisheries in times of poor water quality and would create additional habitat to support water voles. River bank enhancements, backwater | |
| 8.3.26 | Watercress Park - Parcour course | | LB Sutton | Installation of a Parcour (Street Running) Course at Watercress Park | |
| 8.3.27 | Durand Close River Restoration | | LB Sutton | The bank is currently degraded, bare and in poor condition. Some sections are also toe-boarded and over-shaded. The section could be improved to increase habitat diversity and the quality of the river corridor. This is of particular relevance to support future populations of water voles along the river. Riverbank enhancements and naturalisation | |
| 8.3.28 | Hackbridge River Restoration 1 (around the hackbridge) | | LB Sutton | Below Hackbridge: some coir rolls already installed, possible additional coir rolls, plus islands, notch to weir, flow deflectors to promote desilting. Above weir: some coir rolls and flow deflectors already installed, possible additional wetland out and fill plus luner structures. At Shepley Mill / Watermill House weir: fish pass and decoupling currently under consideration by landowner as part of development planning permissions. | Undertake works |
| 8.3.29 | Hackbridge River Restoration 2 | Yes | LB Sutton | River restoration as part of the Hackbridge Project, aiming to make Hackbridge the UK's 'greenest' suburb. This innovative river restoration project will include a 'low carbon link' to deliver Sutton Council's Multi-Utility Sustainable Infrastructure Strategy for Hackbridge, i.e. the river restoration will incorporate a method to deliver energy throughout the newly regenerated suburb, whilst providing an exemplar project of best-practice urban river restoration. Restoration will include naturalising banks and incorporating a low-flow channel to help mitigate the effects of climate change. | The concept has been worked up and is currently being presented to project partners. Sutton Council is keen to progress the project and funding is being sought from a number of sources including utility companies and EU funding streams. This is a long-term project and a feasibility study will be carried out to better inform what is needed and, therefore, the |
| 8.3.30 | Hackbridge Sustainable Neighbourhood | | LB Sutton | Growth and regeneration of Hackbridge as a district centre and sustainable neighbourhood, incorporating Sutton Council's 'One Planet Living' (sustainability/climate change mitigation) principles. The project will be focussed around the creation of a 'Low Carbon Zone', including zero carbon standards for all new developments, redevelopment of older industrial areas for mixed commercial, residential and community uses, improvements to cycle and walking networks, creation of additional public open spaces and enhancements to the public realm, taking account of the need/opportunities for implementing climate change adaptation measures along the River Wandle. | Approval of Final Hackbridge Masterplan, with detailed proposals for redevelopment of Council-owned / private sector opportunity sites, planning permission for development. |
| 8.3.31 | Hackbridge Low Carbon zone - | | LB Sutton | EU project on Climate Change Grants, involves TCPA. Green and Blue Infrastructure, output from the project is to produce a climate change adaptation action plan, producing a high level strategy for the Borough in terms of adaption measures, detailed plan for Hackbridge around urban design, dealing with flood risk and heat island effect, using open space. | |

Project Identification – Rolling Projects List

| Project size (ha / m) | Project owner | Associated programmes | Identified delivery capacity Delivery agency | Total cost | Funding in place | Funding required | Outstanding funding bids | Private Sec sought | Funding notes | Date on site (assuming funding) | * Project Stage | Long term management |
|-----------------------|---|---|---|---|------------------|------------------|-----------------------------|--------------------|---|---|-----------------|---|
| 600 m | London Wildlife Trust (Alex Draper / Claire Shahbazian) | | | 46000 | | | | | Landfill (Viridor) CTP from The National Trust | | | |
| 10 | Wandle Trust (Bella Davies) | | Wandle Piscatros and Wandle Trust | £250 plus installation time with volunteers | £40,403 | | Possibly depending how far | | Wandle Piscatros | Sep-10 | 6 | £0, Wandle Piscatros |
| 1 km | Environment Agency (Jo Heisse) | | | | | | | | | | 1 | |
| 200 m | Wandle trust (William Tall) | | | < £50k | | | | | Landfill (Viridor) Thames Water Settlement EA Wandle Piscatros | | | |
| | LB Sutton (Bill Wyatt / Lynn Robinson) | | | £50k - £250k | no | yes | no | no | | | | |
| | LB Sutton (Maura Collyer) | | | £20k | £20k | £0 | | | Funded from Council capital. Funding in place and agreed. | | | |
| 430 m | Environment Agency (Joanna Heisse) | | | 0 | | | | | Viridor, Thames Water rehabilitation fund, Life+ funding | | | |
| | LB Sutton (Bill Wyatt) | | | | | | | | | | | |
| | LB Sutton (Bill Wyatt) | | | £400k | | | | | | | | |
| | LB Sutton (Jeff Wilson) | | | | | | | | | | | |
| | LB Sutton (Dominic Aslangul) | | | £300k | £0 | | | | | | | |
| | LB Sutton (Bill Wyatt) | | | | | | | | | | | |
| | LB Sutton (Dominic Aslangul) | | | £172,400 | £172,400 | | | | Mostly funded through the LBA Sutton's Public Realm fund, with additional contributions from the Met Police and Viridor. | | | |
| | LB Sutton (Hendryk Jurk) | | | £25k | £25k | | | | Site bid in to restore wet grassland. 12k from Sita plus £12 from public realm. £25k in total. part funded from Sita landfill tax credits | | | |
| 0.1 ha | LB Sutton (Hendryk Jurk) | Wandle Trail | LB Sutton | < £50k | none | £25,000 | | | | | | 0 Sutton Nature Conservation Volunteers |
| | LB Sutton (Bill Wyatt) | Public realm fund Global to Local and Viridor landfill tax | Global to Local and Viridor landfill tax credits | £300k | | 300,000 | | | Global to Local and Viridor landfill tax credits | 2009-2011 | 6 | |
| 0.7 ha | LB Sutton (Hendryk Jurk) | Sutton Biodiversity Action Plan | LB Sutton, London Wildlife Trust | < £50k | none | £50k | | | No resources currently available to develop project further. | unknown | | 0 Resources needed for longterm management. |
| 300 m | Environment Agency (Joanna Heisse) | | | 0 | | | | | Viridor, Thames Water rehabilitation fund, Life+ fund, Natural England funding | | | |
| | LB Sutton (Bill Wyatt / Maura Collyer) | | | £50,000 | £50,000 | | | | | | | |
| 200 m | Environment Agency (Joanna Heisse) | | | 0 | | | | | | | | |
| 50 m | Wandle Trust (Ricky Martinez) | | Volunteers and small costs | <£10k (existing cost = £0 - volunteers + car rolls donation worth approx £3325) | No | Yes | No | | Wandle Trust, EA | Existing works completed 2009; future works 2010 / beyond | 3 | 0, Wandle Trust |
| 3.2 km | John Rosevere | Hackbridge Project (LBS), Wandle Gateways (Landfill Tax) | Partnership between LB Sutton, EA and Wandle Trust and others | Approx £5m | No | Yes | No | Yes | Funding being actively sought | Autumn 2010 | 1 | LB Sutton, Utility Companies, EA |
| 150 ha | Lb Sutton / Various (Project Manager: Jeff Wilson) | Hackbridge Project (LBS), Wandle Gateways (Landfill Tax), LIP (TIL) and Public Realm (LBS/S106) | Lb Sutton, Landowners, Developers | | | | | | Further funding from developer's contributions being negotiated, additional bids for landfill tax and EU funding underway. | | | |
| | LB Sutton (Andria Franca) | | | 400,000 | 300,000 | 300,000 | Plus costs for re-rofitting | | LDA, LB Sutton BioRegional, Sutton Housing P ship, Parity projects | 2009-12 | | |

* Project stage: 0 = notional, 1 = scoping/briefing, 2 = feasibility study, 3 = outline designs, 4 = detailed designs, 5 = tender, 6 = implementation, 7 = management plans

Project Identification – Rolling Projects List

Complete Phase one

| Project number | Project name | Strategic project | Borough / Locality | Project description | Next Steps |
|----------------|---|-------------------|--------------------|---|--|
| 8.3.32 | Butterhill to Shepley Mill River Restoration | | LB Sutton | Project to tie into Butterhill to the Grove (project 8.3.07) and will involve the removal of an obsolete weir, creation of gravel ramps, and in-stream and bank habitat creation and diversification | |
| 8.3.33 | Butterhill to the Grove, Carshalton River Restoration | | LB Sutton | Previously diverted and restored stretch of the Wandale ecologically isolated by the weir at Butler Hill Mill. Removal of three weirs and habitat creation in preparation for the reintroduction of a population of Wandale Trout. Fish pass on Butler Hill Mill | Weirs lowered and removed. Practical visit from the Wild Trout Trust to show volunteers what to do, habitat work with volunteers led by the Wandale Trust and Wild Trout Trust; installation of a fish pass at Butler Hill Mill led by the Environment Agency |
| 8.3.34 | Ecology Centre Grounds Improvement | | LB Sutton | Aspirational need £15,000 to construct demonstration gardens and items to help with education on organic and wildlife gardening. Projects include creation of compost bays and material storage area for grounds maintenance. Further project will need approx. £20,000 to investigate the revival of a borehole to extract ground water for wildlife pond | Funding bid |
| 8.3.35 | Habitat Honeywood | | LB Sutton | A project to refurbish and reinterpret Honeywood Museum by Carshalton Ponds and to increase the number and range of users through a programme of activities. There will be new museum displays which will interpret Honeywood as historic building with a particular focus on John Pattinson Kirk and his family who lived there in the Victorian and Edwardian times. There will also be new displays on water including the River Wandale and local springs and also on the suburban development of the area. Two part time people will be appointed for three years to further develop our educational programme and carry out a range of community activities which will raise the profile of the building | |
| 8.3.36 | Carshalton House - St Pheloma School Lake restoration | | LB Sutton | Aspirational plans to restore the lake in the grounds of the Carshalton House (St Philomenas School), an original source of the River Wandale. Feasibility study needed. | No resources currently available to develop further, funding for feasibility study to be identified |
| 8.3.37 | Hackbridge Sustainable Travel Connections | | LB Sutton | Connecting Hackbridge as a sustainable neighbourhood by developing/improving local, sustainable forms of transport, principally on foot or by cycle. The scope of the project includes: - pedestrian/cycle improvements along London Road to reduce its role as a barrier to east-west movement - enhancing the River Wandale's role as a movement corridor - enhancing east-west pedestrian/cycle routes - creating new public spaces at Hackbridge Station, Felinx industrial area and Hackbridge District Centre. | Submission of area-based scheme to TfL for approval as part of Sutton Local Implementation Plan, with funding for detailed design/implementation in 2011/12 |
| 8.4 | Beddington / Mitcham Country Park | | | | |
| 8.4.01 | Mitcham Common - Habitat projects | | LB Merton | A suite of habitat-related projects on Mitcham Common. a - Heathland is a regional priority habitat with a target for future heathland creation. This project would seek to create and additional 2ha of heathland b - One Island Pond is an important recreational (fishing), amenity and biodiversity resource. However the pond is gradually filling with silt and losing both biodiversity and recreational value. This project would desilt the pond and use some of the silt to create a reedbed which is a regional priority habitat type c - seeks to restore a ditch that feeds off the Beddington Carrier and plant a woodland on the adjoining parcel of land d - seeks to replace the existing dilapidated bylaw signs on Mitcham Common with re-designed and updated signage e - focuses on an area of the Common with poor pedestrian access. The paths on this parcel are well used, given that they are the main pedestrian route for both school children and adults wanting to travel to local schools and transport links, however they are in poor condition. This project seeks to upgrade the paths and landscape quality of the area. | |
| 8.4.02 | Beddington Farmlands | | LB Sutton | Development of the Beddington / Mitcham Country Park, following sand and gravel extraction and landfill tipping operations currently being carried out by Viridor Waste Management within Beddington Farmlands, in accordance with conditional planning permission and subject to a Section 106 legal agreement. The land will be progressively restored as part of phased operations across the site and transferred to Council ownership following aftercare over a 10-15 year period. The future management/maintenance of the land as part of the Country Park will be carried out by a Trust, which will be set up with funds of £1.8m secured under the S106 Agreement. The agreed restoration plan and the conservation management plan outline the restoration of the whole Beddington Farmlands landfill site as nature reserve. The reserve will contain the 2 lakes, reedbeds, meadows and areas of wet grassland and acidic grassland. The plan includes large areas that will have no or restricted public access intended to provide habitat for target species such as wading birds, breeding reed bed species, tree sparrows and bats. The lakes have been designed to provide strategic flood alleviation. A number of bird hides will be provided. All existing ecological, heritage and archaeological features of importance will be protected or enhanced, with improved signage/interpretation. | Implementation of scheme, along with the establishment of Beddington Farmlands Trust as future management body. The future management/maintenance of the Country Park will be carried out by the Trust, which will be set up with funds of £1.8m secured under the S106 Agreement. |
| 8.4.03 | Beddington Park Cycling Project | | LB Sutton | Project within Beddington Park to enable cyclists with disabilities to get mobile. Will be based in pavilion, have complete circuit, one part missing but land leased out elsewhere on long term lease. | |
| 8.4.04 | Grange Playground | | LB Sutton | Installation of adventure type playground with an emphasis on inclusion at the Grange playcentre in the Grange Park | |
| 8.4.05 | Beddington Park Regeneration | | LB Sutton | A number of landscape, wildlife, sustainable transport and recreation project ideas being developed through Friends of Beddington and Grange Park. | |
| 8.4.06 | Elms pond Ornamental Lake and Fountain Renovation | | LB Sutton | Works to the ornamental Lake at Elms Pond including: repair to the fibre glass liner, new pumps, new circulatory system, new fountain, new filters, new control equipment. | |
| 8.4.07 | Westcroft Leisure Centre refurb. | | LB Sutton | Multi million pound refurbishment and modernisation of the council's Westcroft leisure centre. Promoting healthy living | The Council is in the process of setting up an Local Asset Backed Vehicle to fund the project. This work is led by Ade Adobayo, Executive Head of Property and Construction |
| 8.4.08 | Beddington Park Churchyard Flint Wall | | LB Sutton | Funding for restoration of 18th Century flint wall around the Churchyard, £20,000 public realm funding towards a friends group bid to Viridor for the full amount of £70,000. | |
| 8.4.09 | Beddington Park Churchyard Lychgate | | LB Sutton | Churchyard Lych gate restored. With £60,000 English Heritage Grant matched with £70,000 Council Capital | |
| 8.4.10 | Wildflower project | | LB Sutton | Part of the house sparrow project below - 5 sites in total - Rosehill Park East, Perretts Field, Beddington Park, St Helier Open Space, and Cheam Park and Recreation Ground. | |
| 8.4.11 | House Sparrow Project | | LB Sutton | Part of a wider 3-year project managed by RSPB, funded by SITA, to plant and maintain meadows to encourage sparrows in the area project its goal to measure the effects of manipulating management of urban green space to increase insect and seed biomass for the house sparrow, a significantly declining species | The data gathered by this project will be essential for shaping conservation management plans to enhance biodiversity and habitats in Sutton. Furthermore the habitat enhancement will contribute towards meeting the targets in Sutton's Biodiversity Action Plan, and those within London's House Sparrow Species Action Plan. |
| 8.4.12 | Carew Manor Wetland | | LB Sutton | Access improvements and interpretation. This includes creation of a new gateway, footpath, site interpretation and bramble removal. It is anticipated to make the site accessible for outdoor education. | Funding bid - £10,000 needed. |

Project Identification – Rolling Projects List

| Project size (ha / m) | Project owner | Associated programmes | Identified delivery capacity Delivery agency | Total cost | Funding in place | Funding required | Outstanding funding bids | Private Sec sought | Funding notes | Date on site (assuming funding) | * Project stage | Long term management |
|---|------------------------------|---|--|---|---|------------------|--------------------------|--------------------|--|---|-----------------------------|---|
| 650 m | Wandle Trust (Bella Davies) | | Wandle Trust / Environment Agency | £26,000 TBC | | yes | DEFRA | no | | | | Oct-10 Wandle Trust / Environment Agency |
| 360 m | Wandle Trust (Bella Davies) | Trout reintroduction | Wandle Trust, Wild Trout Trust, Environment Agency | 30000 plus volunteer time | Partly | £10,000 | | | More funding sought as needed | Autumn 2010 5 to 6 | | EA - fish pass maintenance |
| 2.2 ha | LB Sutton (Hendryk Jurk) | Sutton Biodiversity Action Plan | LB Sutton | £30,000 | none | £30,000 | | | | a.s.a.p | | 3 Sutton Nature Conservation Volunteers and LB Sutton, revenue funding required |
| | LB Sutton (John Phillips) | | | 515,805 | 515,805 | | | | Heritage Lottery fund-£334,930 Sutton Arts Council - £15,000 Volunteer time - £25,875 LBS Capital funding £140,000 | | | |
| 1.3ha | LB Sutton (Hendryk Jurk) | Sutton Biodiversity Action Plan, 1million ponds project | LB Sutton | £250k - £1m | none | to be identified | | | | | 0 | |
| 1.5 sqkm | LB Sutton (Jeff Wilson) | Hackbridge Project (LBS), Wandle Gateways (Landfill Tax), LIP (TL) and Public Realm (LBS/S106) programmes | | | | | | | Further funding from TIL proposed under 2010 Local Implementation Plan, further funding from developer contributions being negotiated and additional bids for landfill tax and EU funding underway | | | LB Sutton |
| a = 2 ha b = 0.5 ha c = 1 ha d = N/A e = 1 ha | LB Merton (Marlin Boyle) | | Mitcham Common Conservators | Each of the 5 projects will cost under £50K | No funding in place for any of the projects | | | | Several of the projects could be funded from Landfill Tax Credits | All before 2012 | a = 0 b = 3 c-e = 1/2 | Future maintenance costs will be built in to Mitcham Common Conservators annual budget |
| 92 ha | LB Sutton (Hendryk Jurk) | Planning conditions and S106 agreement | Vendor to deliver restoration work and development of nature reserve. Beddington Farmlands Trust to be established for long term management. | Approx £5m | Yes | No | | | Site restoration carried out by developer, further funding required for additional infrastructure. | Progressive 7 restoration/aftercare on-going, transfer of Phase 1 to LB Sutton 2015/6 | | Future management/ maintenance carried out through Beddington Farmlands Trust with endorsement of £1.8m secured via S106 |
| | Eco Local | | | | | | | | Funded by LBS public realm + Eco Local (environmental charity based in Carshalton) | | | |
| | LB Sutton (Scott Funell) | Playbuilder project | | £90,000 | £90,000 | | | | | | | |
| | Friends of Beddington Park | | LB Sutton + Friends of Beddington Park, + BIG/LTCS/TIL/Sport England | £5k - £170k | | £5k - £170k | | | Potentially LB Sutton plus BIG/LTCS/TIL/Sport England | 2009- on-going | | |
| | LB Sutton (Bill Wyatt) | | | £60,000 | | | | | | | | |
| | LB Sutton (Sarah Groom) | NA | Not Known | £8m | No | £8m | NA | Yes | The Council is setting up a Local Asset Backed Vehicle to finance the scheme | Not Known | 1 | LB Sutton's leisure management contractor |
| | LB Sutton (Bill Wyatt) | | | £130,000 | | | | | | | | |
| | LB Sutton (Dominic Aslangul) | | | | | | | | | | | |
| | LB Sutton (Dominic Aslangul) | | | ED as labour and material costs covered by SITA | £8427 in Year 1. | | | | £8500 in 2009 (funded by SITA) | | | The project will run for 3 years after which the hay meadow plots will be closed down. The wildflower seed mix plots at St Heller, Chess and Beddington Park will be retained using existing parks revenue budget |
| 1 ha | LB Sutton (Hendryk Jurk) | Sutton Biodiversity Action Plan | LB Sutton | £10,000 | none | £10,000 | | | | a.s.a.p | | 3 Sutton Nature Conservation Volunteers and LB Sutton |

* Project stage: 0 = notional, 1 = scoping /briefing, 2 = feasibility study, 3 = outline designs, 4 = detailed designs, 5 = tender, 6 = implementation, 7 = management plans

Project Identification – Rolling Projects List

| Project number | Project name | Strategic project | Borough / Locality | Project description | Next Steps |
|----------------|---|-------------------|------------------------|--|---|
| 8.4.13 | Tramside walking & cycling Route | | LB Croydon - LB Merton | Improvement and installation of shared-use route between Wandale Park and Mitcham Junction, led by Boroughs, TfL and Sustrans. | Feasibility work to determine cost of connection from end of Connect2 route to Mitcham junction. |
| 8.5 | Wandle Links | | | | |
| 8.5.01 | New South Quarter - Croydon River Restoration | | LB Croydon | Planning obligation with the developers to restore the Wandle through the site. Deculverting, bank naturalisation, introduction of pools and riffles. | |
| 8.5.02 | River restoration between Wandale Park and Waddon Ponds with enhancement to the Wandale Trail | | LB Croydon | The project will involve deculverting the River Wandale thereby linking up Waddon Ponds to the planned deculverted section of the river. This work will be implemented as part of a planning condition for future developments. A pre-planning application has been submitted for the area. | Progress planning applications for the site. First phase implementation of the New South Quarter Deculverting by Barratt Homes scheduled for September 2011 |
| 8.5.03 | Waddon Ponds | | LB Croydon | Waddon Ponds is well used by the local residents who take much enjoyment from walking around the park, using the playground or watching/feeding the wildfowl. However due to the high population of wildfowl the banks show significant deterioration and in order to sustain the biodiversity of the ponds, zonal recognition i.e. ecology, breeding (wildfowl & fish) etc. needs to be identified. A review of the ornamental planting needs to be carried out in order to reflect the character of the ponds. The addition of 'natural play' would complement the current play area and would provide an introduction to nature conservation through 'play'. Overall the park is starting to look 'rundown' and the banks to the ponds have become so eroded that they will soon be at a stage beyond economical repair. | Master Planning - July 2010 Feasibility study including drawings - October 2010 Tender for the Works - December 2010 Project delivery - September 2011 (taking into account wildfowl breeding restrictions) Works are dependent on the outcome of Stage II of the 'Parks to be Proud Of' initiative |
| 8.5.04 | Wandle Park | | LB Croydon | Wandle Park is well used and well-loved by local residents for its green open space, mature trees, circular promenade, football pitches, skatepark and dedicated park ranger. However, since the 1960s it has suffered a steady decline due to reduced funding, increased user pressures and anti-social behaviour. Located in an area of multiple deprivation close to Croydon's town centre, there is also a problem with crime and the perception of crime in the park. The park lies on the Wandale Trail, which traces the route of the River Wandale from the river's origins in Croydon to Wandsworth - but the river itself was buried in 1967 in a culvert running underneath the park - originally as a short-term engineering solution to fluctuating water flows due to the intensified urban development of Croydon town centre. A key ambition of the project is to de-culvert the river within the park - enhancing biodiversity, flood storage and providing cooling to reduce the urban heat island effect. To attract new users to the park, the project will take advantage of the park's proximity to the tramline that runs between Croydon and Wimbledon. By adding a new entrance to the park, the new community housed in the adjacent residential development will be connected to the park, and wider connections will also be enabled - allowing use of the park as a cut-through from the retail centre in the North West of the park to Croydon town centre. The project also includes enhancement of the sports provision and changing facilities - with the existing park pavilion to be eco-retrofitted. | A pre-application has been submitted for the river and lake restoration proposal. The other additional facilities that will require planning permission are the skatepark, the new play space and the outdoor gym. River restoration - complete the feasibility study with detailed design of the outline structures, tender for the design of the structures, tender for the river works. Target completion date - January 2011. Completing detailed design for the river restoration is estimated to cost £100,000. Detailed design for the rest of the enhancements is estimated at £100,000. Design will be carried out internally - headed up by Tom Sweeney as the landscape architect. Croydon Council has established a multi-disciplinary internal team to realise this project. |
| 8.5.05 | Regeneration of Wellesley Road and Park Lane | | LB Croydon | A major public realm project in the heart of Croydon town centre. Key project objectives are: - To enliven the Wellesley Road / Park Lane area with new uses and activities. - Improving environmental performance with a special focus on public transport, walking and cycling - making sustainable travel connections and promoting healthy lifestyles. - Creation of a network of high quality public spaces which set the standard for future street improvement projects in the Borough, and increase accessibility to open space and natural areas. - Improving the perception of Croydon as an attractive place with unique character and identity. The physical regeneration consists of the following phases: 1. Reconfiguration of the Park Lane gyratory to improve traffic priority, creating a street and a city square. 2. Transformation of the dual carriageway to include a dedicated public transport corridor, cycle routes, at grade pedestrian crossings and various other facilities including recreational spaces. 3. Upgrading public transport facilities, better bus interchange and waiting facilities. 4. A suite of smaller public realm interventions at different points along the project area. 5. Integration and development of the public realm network creating well connected 'urban living rooms' in the areas adjacent to the main corridor. | Further extension of public realm network in Croydon Metropolitan Centre. Encouragement of public realm provisions in private properties, ensuring at least their part-time public accessibility. |
| 8.5.06 | Croydon Connect 2 | | LB Croydon | Croydon Park Links - Improving pedestrian and cycle links between Wandale Park, Lloyd Park and South Norwood Country Park, via Croydon town Centre. Partnership project between Sustrans and LB Croydon. Core Routes between Wandale Park and Lloyd Park must be delivered by May 2013. Improved crossings of Park Lane and Barclay Road key aim of the project. | Preliminary design work is current being undertaken on the core route. Once complete these will be circulated to the project steering group and will lead to final agreement on the alignment of the core route. |
| 8.6 | Norbury Brook | | | | |
| 8.6.01 | Norbury Park | | LB Croydon | Norbury Parks is a large urban park that has a rather lack-lustre image. The demise of organised sport in the park has left a 'green desert' with recreational and play facilities on offer near the park entrances. The Norbury Brook, a tributary of the River Wandale, runs through the park in a concrete culvert and channel. Norbury Brook is therefore disconnected from both the wider environment and the local community and is currently of low habitat value. LB Croydon's 'Parks to be Proud Of' initiative is asking the community to decide how resources will be allocated in the regeneration of the park - options currently being voted on include: access and entrance improvements, contributions to costs of deculverting the Brook, wildflower meadows, refurbish pavilion for community use, BMX track and new play equipment. | Parks to be Proud of - further community engagement and design stage through 2010 - implementation late 2010 / completion 2012. River restoration work can only be progressed as funds become available to work up details of full feasibility and current costs. |
| 8.6.02 | Thomton Heath Recreation Ground | | LB Croydon | The park was one of the first public parks in Croydon, purchased to meet the growing need of the rapidly growing population. The park is surrounded on three boundaries by terrace housing and the Norbury Brook which runs in an open culvert. This Victorian park has few original features but the site is level with the original tree lined path network for 'promenading' around. The park has steadily declined over the years and although the bowling green and pavilion still remain the sports pavilion is derelict. The project aims to refurbish the old sports pavilion to become a hub for the local community to use. The existing multi use games courts would be refenced and facilities enhanced with an outdoor gym and cricket wicket. The two main entrances into the site would be widened to enable events to be held in the park. Part of the site will be managed as a wild flower meadow from 2010 to enhance access to nature and provide natural play opportunities. The existing sports facilities will be enhanced with an outdoor gym, cricket wicket, 'Fartek' trail and football pitches. There is an opportunity for the community to develop | Parks to be Proud of - further community engagement and design stage through 2010 - implementation January 2011, completion March 2012. Design will be carried out internally - headed up by the Parks to be Proud of Project Manager. Croydon Council has established a multi-disciplinary internal team to realise this project. |
| 8.7 | North Downs | | | | |
| 8.7.01 | Roundshaw Park - Woodland improvements | | LB Sutton | £10,000 donation from UPS to improve woodlands in Roundshaw woods and open grassland. | Implementation underway |
| 8.7.02 | Roundshaw Park improvements | | LB Sutton | Refurbishment of playground, tennis courts and pavilion, with new basketball court installed. | |

Project Identification – Rolling Projects List

| Project size (ha / m) | Project owner | Associated programmes | Identified delivery capacity Delivery agency | Total cost | Funding in place | Funding required | Outstanding funding bids | Private Sec sought | Funding notes | Date on site (assuming funding) | * Project stage | Long term management |
|---|---|--|--|--------------|---|--|--------------------------|---|---|--|-----------------|--|
| | Cross Borough, TIL, Sustrans | Greenways | Cross Borough, Sec 106, TIL, Sustrans Connect2 | £1m - £2m | | | | | Sec 106, TIL, Sustrans Connect2 | | 1 | |
| 150 m | Tim Barnard Associates | | | 0 | | | | | | | | |
| | LB Croydon (Ruth Coulson) | | Croydon Council, the Environment Agency and the Landowners | | | | | | Project will be private sector funded 2011-2016 - costs unknown. | | | |
| 3.44 ha | LB Croydon (Helen Lomasney / Pauline Scott Garrett) | Croydon's parks' regeneration scheme 'Parks to be Proud of' | LB Croydon | £195,000 | Stage II of 'Parks to be Proud Of' | £80k - £100k | | | Awaiting funding from Parks to be Proud Of before seeking further external funding. | Sep-11 | | LB Croydon £12,000 per annum increase to parks maintenance and infrastructure budget from the existing expenditure of £48,000 per annum. |
| 8.5 ha | LB Croydon (Ruth Coulson / Pauline Scott Garrett) | The Mayor of London's 'Help a London Park' project 'Parks to be Proud of' - Croydon Council's internal parks improvements initiative | LB Croydon | £4m | £1,660,000 | £2,340,000 | | | Secured funding: - £1m S106 funding from adjoining Barnett homes residential development. - £400k 'Help a London Park' from the Mayor of London, - £160k 'Parks to be proud of' funding from Croydon Council - £50k River Restoration funding from The Environment Agency - £50k Playbuilder funding. Bid submitted to the Heritage Lottery Fund 'Parks for People' scheme for £1.6m in March 2010. | River restoration - 2012 Other facilities + enhancements - 2011-2013. | | LB Croydon £30,000 per annum increase to parks maintenance budget from the existing expenditure of £80,000 per annum. |
| 12.3 ha | LB Croydon (Agnieszka Zimnicka / Mike Kiely) | Croydon LDF Mayor's Great Spaces projects: - Connect 2, - CMC masterplans | London Borough of Croydon in partnership with TIL and LDA | > £10m | GAF: £850,000 LDA: £350,000 Connect 2: £500,000 | app. £45m | | seeking for private sector involvement in later stages of delivery. | Existing sources of funding: Growth Area Fund, Mayor's Great Spaces grant, s106, CIL. | Feb-12 | 2 | London Borough of Croydon |
| | Sustrans / LB Croydon | Croydon Greenways Programme | Sustrans, LBC | £1m - £2.5m | £550,000 | TBC - approx £1m shortfall to delivery core route. | | | BIG Lottery - TIL - Walking and Greenways. | 2009 - 2013 | 3 | LB Croydon will adopt the route following delivery, which must remain open for at least 40 years. |
| 11.5 hectares for whole park - river restoration 320m | LB Croydon (Pauline Scott Garrett / Andrew Williams) | | Croydon Council | Approx £400k | TBC approx - £100 - £200k | £200k - 300k | | | Secured funds through Parks to be Proud of - Croydon Council. Parks to be Proud of initiative estimated value in Norbury Park - £100 - £200k River restoration - resources required estimated £220k | Parks to be Proud of - delivery by 2012 | | £14000 - increase management in establishing new river corridor. Croydon Council |
| 5.46 ha | LB Croydon (Mary Ann Winterman / Pauline Scott Garrett) | | Croydon Council | £495,000 | Up to £160,000 via 'Parks to be Proud of.' | £335,000 | | | Secured funding: £160,000 'Parks to be Proud of' funding from Croydon Council | 2011-2012 | | LB Croydon £10,000 per annum increase to parks maintenance and infrastructure budget from the existing expenditure of £30,000 per annum. |
| | LB Sutton (Hendryk Jurk) | Sutton Biodiversity Action Plan | Sutton Nature Conservation Volunteers | £10,000 | yes | | | | Further funding required in long term for major tree works. | | 7 | Site maintenance through volunteers. |
| | LB Sutton (Maura Collyer) | | | £120,000. | | | | | | | | |

* Project stage: 0 = notional, 1 = scoping/briefing, 2 = feasibility study, 3 = outline designs, 4 = detailed designs, 5 = tender, 6 = implementation, 7 = management plans



Allotments on the River Wandle in Wandsworth



Phase One Early Delivery

This section identifies a first phase of projects to deliver area objectives and opportunities.

Phase One – Project Details



Associated Projects:

Restoration of the River Wandle

Partners / Supportive Organisations / Funders:

LB Wandsworth, Environment Agency

Governance:

LB Wandsworth with support from Environment Agency and Port of London Authority

Land Ownership: LB Wandsworth

Planning Issues / Designations:

Agreement will be required from LB Wandsworth, EA, Port of London Authority

Location: TQ2548575283

Size: 120 m

Project Type: Biodiversity, Enhancement, Habitat Restoration

Delivery / Budget / Process Status:

Funding in place so far £350k. £100k from Environment Agency & £250,000 WBC via S106 agreement. Funding required for wier removal estimated at £2m.

Long Term Management Scenarios:

Following removal of the weir, no further management will be needed.

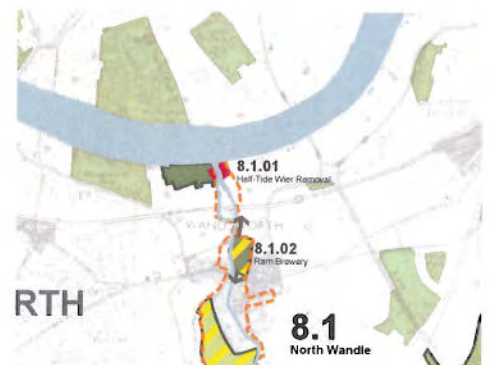
8.1.01 Wandle Half-tide Weir Removal

Removal of the Wandle half-tide weir to re-establish the Wandle tidal creek to a more natural functioning. This will provide inter-tidal habitat creation and restoration, opportunities for which are particularly rare in London. The project will achieve objectives of increasing access to nature; improving resilience to climate change, enhancing distinctive local destinations.

Currently the weir causes a back up of silt limiting the ability of the river ecosystem to function properly. The back-up results in impeded light levels and the burial of the natural gravelly bottom of the river beneath a deep layer of silt; damaging fish spawning grounds and reducing habitat for invertebrates. The removal of the weir and the silt which has backed

up behind it would enable the natural tidal effects to be returned to the river mouth. This would result in continued natural scouring of debris from the area, restoring the gravel bottom to the river and providing improved feeding grounds for wading birds. Fish spawning grounds would also be improved in quality.

This is an opportunity unique in London to restore natural fluvial processes to a key river in a location which is fully accessible to the public, and will also seek to showcase how biodiversity can support the regeneration of a formerly industrialised area.



Phase One – Project Details

**Associated Projects:**

Restoration of the River Wandle

Partners / Supportive Organisations / Funders:

Delivery through the planning process.

Governance:

LB Wandsworth

Land Ownership: LB Wandsworth

Location:

TQ 25574 74765

Size: 2 Hectares

Planning Issues / Designations:

-

Process Status:

-

Budget Status:

-

Next Steps:

Following refusal of the planning application by the Secretary of State, it is anticipated that a revised planning application will be received by the end of 2010 / beginning of 2011.

8.1.02 Ram Brewery Redevelopment

Redevelopment of the Ram Brewery - opening up the site to public access for the first time in over 150 years - which will provide 1.02ha of high quality public realm, including two public open squares - each framed by the refurbished listed brewery buildings and riverside walkways.

The development will also deliver significant benefits in terms of flood risk management, ecological habitat and riverside recreation:

- 400 metres of replaced and refurbished flood defences, along with new access space for flood defence maintenance;
- retreated flood defence line along the river corridor to create space for intertidal terracing used for wildlife habitat improvement;

- raising the river wall level to increase protection from river flooding;
- sustainable drainage infrastructure to decrease flows to the currently overloaded and combined sewer systems;
- new habitat creation and biodiversity enhancement landscaping, including roof gardens and nesting boxes - approximately 25,000 square feet of green roofs for ecological benefit across the site
- a new riverside walking and cycling path with three bridges to create connectivity to upstream and downstream parts of the river, continuing the Wandle Trail.



Phase One – Project Details



Associated Projects:

Wandle River Restoration

Partners / Supportive Organisations / Funders:

50k secured through S106 for Westfield House site

Governance:

LB Wandsworth

Land Ownership: LB Wandsworth

Location: TQ 25597 73971

Size: 24 Hectares

Project Type: Park Improvements

Planning Issues / Designations:

Process Status:

Draft brief completed.

Budget Status:

50k secured through S106 for Westfield House site

8.1.03 King George's Park

The creation of a Management Plan for King George's Park to identify future landscape and facility enhancements. At present King George's Park is divided into sections with different landscape characters, including large amenity sports fields, an ornamental lake, play areas, a bowling green and tennis court. The River Wandle flows through the Park but is segregated from view by high railing and steep banks. The Management Plan would identify landscape enhancements, including; river restoration with bank contouring and reed bed flood catchment areas creating improvement in public access to the nature and habitats associated with the River Wandle; creation of additional allotment space; restoration of the original layout in the north of the park closest

to Wandsworth Town Centre with new ornamental planting; improvement of sports provision, with improved tennis courts, changing rooms, and leisure centre redevelopment; additional play provision and improvements to walking and cycling links to, through and within the park. The Management Plan would also plan the integration of the All Weather Sports Pitch at Southfields College which will be shared school and public use on land that is currently part of Park. The improvements identified in the Management Plan could contribute to all of the Green Grid Strategic objectives in a major area of open space in a town centre. It already provides access to open space, nature, sustainable travel, food production and healthy living, as well as acting as a distinctive local destination.



Phase One – Project Details



Associated Projects:

Merton Priory Park [8.1.07]

Partners / Supportive Organisations / Funders:

-

Governance:

LB Merton

Project Owner: Paul McGarry

Land Ownership:

Various

Location: TQ 2669 7024

Size: -

Project Type: Masterplan

Planning Issues / Designations:

-

Delivery Status / Next Steps:

LDF Core Strategy adoption (Feb 2011)

Masterplan production with HCA and GLA - Summer 2011?

Budget Status:

-

Project Feasibility:

-

8.1.06 Colliers Wood Regeneration

Colliers Wood is designated as one of the GLA's Area for Intensification and has recently been re-designated in LB Merton's LDF as a Town Centre. The Council is now challenged with turning 3 out-of-town retail destinations into one coherent town centre that will provide new jobs and housing in Colliers Wood. Colliers Wood has a rich heritage with Merton Abbey Mills and Merton Priory.

The Council wish to promote the heritage of the River Wandle in a masterplan for the area. Colliers' Wood also lies within the Wandle Valley Flood Zone. The masterplan will seek to create new additional green spaces to act as flood storage capacity for the area. There is potential for Colliers Wood to become the new town at the Heart of the Wandle Valley

Park. The first step in transforming Colliers Wood is redeveloping the Colliers Wood Tower. The Council are in discussion with the owner and expect a new planning application in Autumn 2010.

Merton Priory Park is a significant new green space which could be created through the town centre regeneration. Located between Sainburys and Priory Retail Park, and housing the remains of Merton Priory, the Park would be at the heart of the new town centre (subject to negotiation and redevelopment/intensification of the Sainburys/Priory Retail/Tower sites). The creation of this park would represent a major contribution to the open space network - solving an existing 'missing link' along the Wandle Valley.



Phase One – Project Details



Associated Projects:

Morden Hall Park - improved paths, river restoration, play area.

Partner / Supportive organisations / funders:

Heritage Lottery Fund and InterRegVb

Governance:

National Trust with LB Merton and Environment Agency

Land Ownership:

National Trust

Location:

TQ 2616 6860

Size:

0.8 Hectares

Project Status:

Design completed June 2010.

Budget Status:

£2.1 Million secured including £990,000 from HLF. Further £300,000 of grant applications in progress.

Next Steps:

Planning permission, grant success

Project Feasibility:

Delivery September 2010 - October 2011

The project will create a new, full time, 2-year Project Coordinator post to ensure delivery of the project.

In addition, a Community Projects Manager will work with the local community to develop and deliver a programme of community engagement, training and volunteer opportunities, activities and events.

8.3.02 Morden Hall - Heart of The Park

National Trust led project to develop the historic stable yards into a living green demonstration centre of learning. The project will showcase best practice on 'greening' of historic buildings. The project will:

- Restore and renovate the 19th century stable yard to create a future-proof, multi-functioning building that becomes the heart of the activities in the park and a centre for sustainable living.
- Install a number of features to help achieve carbon neutrality, such as insulation, photovoltaic panels, an air source heat pump and a wood burning stove.
- Convert the stable yard to provide public toilets, a small café, offices for National Trust staff, exhibition space (the Livinggreen centre), workshop space for craft artists and a family picnic area.

- Create a permanent and temporary exhibition space in the Livinggreen centre to enable visitors to understand the restoration of the stable yard, and learn about and be inspired about sustainable renovation and renewable energy.
- Conserve the waterwheel and replace its paddles to reflect the industrial history of the park.
- Install a hydroelectric turbine on the bank of the river behind the west Snuff Mill to provide electricity for the stable yard. The turbine – an Archimedean screw – will be visible as a new modern "wheel" harnessing the power of the water.
- Construct a new maintenance yard between the orchard, apiary + the stable yard to house vehicles and machinery currently stored in the stable yard.
- Install a fish pass so that fish can pass the weir.



Phase One – Project Details



Associated Projects:

Ravensbury Park, Backchannel River Restoration (8.3.09) + Ravensbury Park Spawning Project (8.3.11)

Partner / Supportive organisations / funders:

Friends of Ravensbury Park, Wandle Trust, and London Wildlife Trust.

Governance:

Environment Agency (Joanna Heisse)

Land Ownership:

-

Location: TQ 2675 6797

Size: 1km

Project Status:

-

Budget Status:

-

Next Steps:

Develop ideas with Friends of Ravensbury Park, Wandle Trust, Environment Agency and London Wildlife Trust

Project Feasibility:

-

8.3.10 Ravensbury Park River Restoration

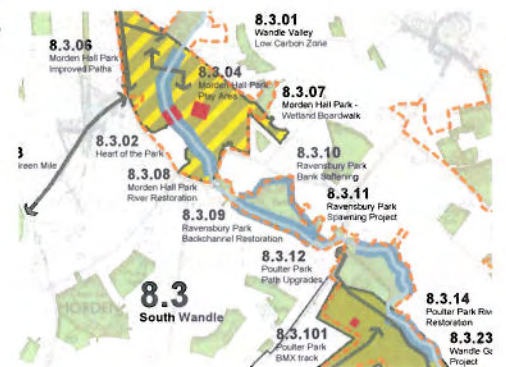
Restoration of the main channel within Ravensbury Park. The aims of the project are:

- To enhance the ecological value of the Wandle by undertaking bank naturalisation and enhancements., such as toe board removal, bank reprofiling, back water creation and installing planted coir rolls.
- This will enhance the in stream ecology and provide potential habitat for water voles.

The project is being led by the Environment Agency, with ideas being developed in collaboration with Friends of Ravensbury Park, Wandle Trust, and London Wildlife Trust.

A related project is being developed concurrently for the restoration of the backchannel within the park:

improving instream habitat through weed planting, coir rolls, flow deflector and tree thinning. This project aims to improve the spawning habitat for barbel, chub, dace and trout.



Phase One – Project Details



Associated Projects:

Beddington Park Regeneration

Partner/ Supportive organisations / funders:

LB Sutton / Viridor

Governance:

LB Sutton

Project Manager: Mark Dalzell / Hendryk Jurk

Land Ownership:

Thames Water Ltd

Location: TQ 290 660

Size: 92 Hectares

Project type:

Land Restoration / Nature Reserve

Project Status:

Progressive restoration/aftercare on-going, transfer of Phase 1 to LB Sutton 2015/6.

Budget Status:

£1.8m secured via S106, further funding required in long term.

Delivery Agency / Long-Term Management:

Viridor to deliver restoration work and development of nature reserve. Long term management by Beddington Farmlands Trust (to be established with endowment of £1.8m secured via S106)

Next Steps:

Establishing Beddington Farmlands Trust as future management body and implementation of scheme.

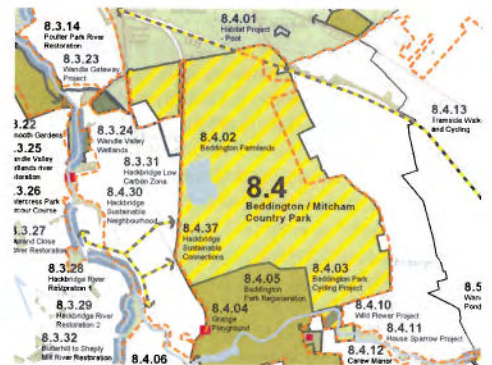
8.4.02 Beddington Farmlands

Development of the Beddington / Mitcham Country Park, following sand and gravel extraction and landfill tipping operations currently being carried out by Viridor Waste Management within Beddington Farmlands, in accordance with conditional planning permission and subject to a Section 106 legal agreement.

The land will be progressively restored as part of phased operations across the site and transferred to Council ownership following aftercare over a 10-15 year period. The future management/maintenance of the land as part of the Country Park will be carried out by a Trust, which will be set up with funds of £1.8m secured under the S106 Agreement.

The agreed restoration plan and the conservation management plan outline the restoration of the whole Beddington Farmlands landfill site as nature reserve. The reserve will contain the 2 lakes, reedbeds, meadows and areas of wet grassland and acidic grassland. The plan includes large areas that will have no or restricted public access intended to provide habitat for target species such as wading birds, breeding reed bed species, tree sparrows and bats. The lakes have been designed to provide strategic flood alleviation. A number of bird hides will be provided

All existing ecological, heritage and archaeological features of importance will be protected or enhanced, with improved signage/interpretation.



Phase One – Project Details



Associated Projects:

Hackbridge Project (LBS), Wandle Gateways (Landfill Tax), LIP (TrL) and Public Realm (LBS/S106) programmes.

Governance:

LB Sutton
(Project Manager: Jeff Wilson)

Land Ownership: LB Sutton / Various

Location: TQ 284 6610

Size: 150 Hectares

Planning issues / designations:

Project type:

Regeneration.

Budget Status:

Further funding from developer's contributions being negotiated, additional bids for landfill tax and EU funding underway.

Delivery Agency:

LB Sutton, Landowners, Developers

Next Steps:

Approval of Final Hackbridge Masterplan, with detailed proposals for redevelopment of Council-owned/ private sector opportunity sites, planning permission for development.

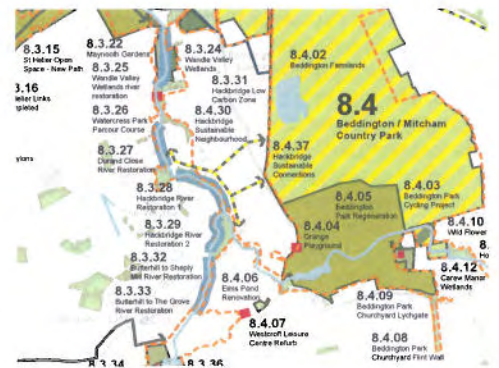
Project Feasibility Assessment:

Implementation phase of project is currently unfunded.

8.3.30 Hackbridge Sustainable Neighbourhood

Growth and regeneration of Hackbridge as a district centre and sustainable neighbourhood, incorporating Sutton Council's 'One Planet Living' (sustainability/ climate change mitigation) principles.

The project will be focussed around the creation of a 'Low Carbon Zone', including zero carbon standards for all new developments, redevelopment of older industrial areas for mixed commercial, residential and community uses, improvements to cycle and walking networks, creation of additional public open spaces and enhancements to the public realm, taking account of the need/opportunities for implementing climate change adaptation measures along the River Wandle.



Phase One – Project Details



Associated Projects:

Hackbridge Sustainable Neighbourhood Project (LBS),
Wandle Gateways (Landfill Tax)

Partner / Supportive organisations / funders:

Partnership between LB Sutton, EA and Wandle Trust and others

Governance:

Project Owner: Wandle Trust (Rick Martinez)

Location: TQ 280 659

Size: 2 miles

Project Status:

The project is currently being scoped and funding sought.

Budget Status:

Estimated cost = £5m. Funding being actively sought

Next Steps:

A pre-feasibility study will be carried out to better inform what is needed and, therefore, the likely project cost.

Project Feasibility:

Autumn 2010

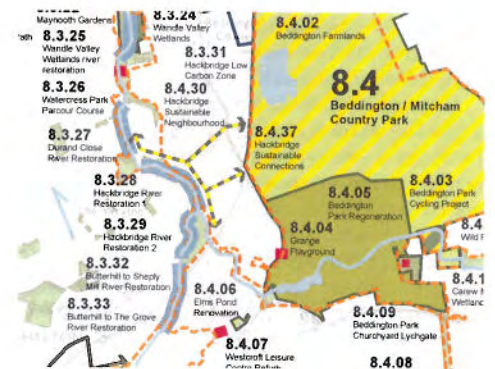
Long-Term Management:

LB Sutton; Utility Companies; Environment Agency; Wandle Trust

8.3.28 & 8.3.29 Hackbridge River Restoration

River restoration as part of the Hackbridge Project, aiming to make Hackbridge the UK's 'greenest' suburb. This innovative river restoration project will include a 'low carbon link' to deliver Sutton Council's Multi-Utility Sustainable Infrastructure Strategy for Hackbridge, i.e. the river restoration will incorporate a method to deliver energy throughout the newly regenerated suburb, whilst providing an exemplar project of best-practice urban river restoration.

Restoration will include naturalising banks and incorporating a low-flow channel to help mitigate the effects of climate change.



Phase One – Project Details



Associated Projects:

Hackbridge Project (LBS), Wandle Gateways (Landfill Tax), LIP (TfL) and Public Realm (LBS/S106) programmes

Partner / Supportive organisations / funders:

Transport for London

Governance:

Project Owner: Jeff Wilson

Land Ownership:

LB Sutton

Location:

TQ 281 659

Size:

1.5 sq.km

Project Status:

Outline / Detailed Design

Budget Status:

Further funding from TfL proposed under 2010 Local Implementation Plan, further funding from developer contributions being negotiated and additional bids for landfill tax and EU funding underway

Next Steps:

Submission of area-based scheme to TfL for approval as part of Sutton Local Implementation Plan, with funding for detailed design/implementation in 2011/12.

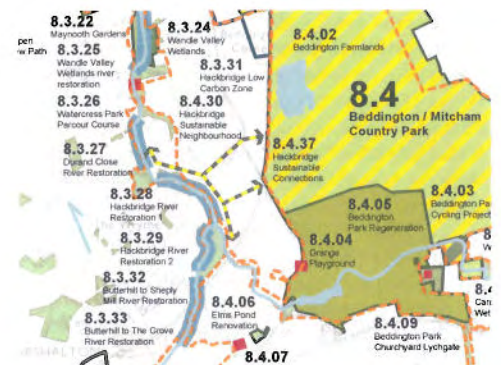
Long-Term Management:

LB Sutton

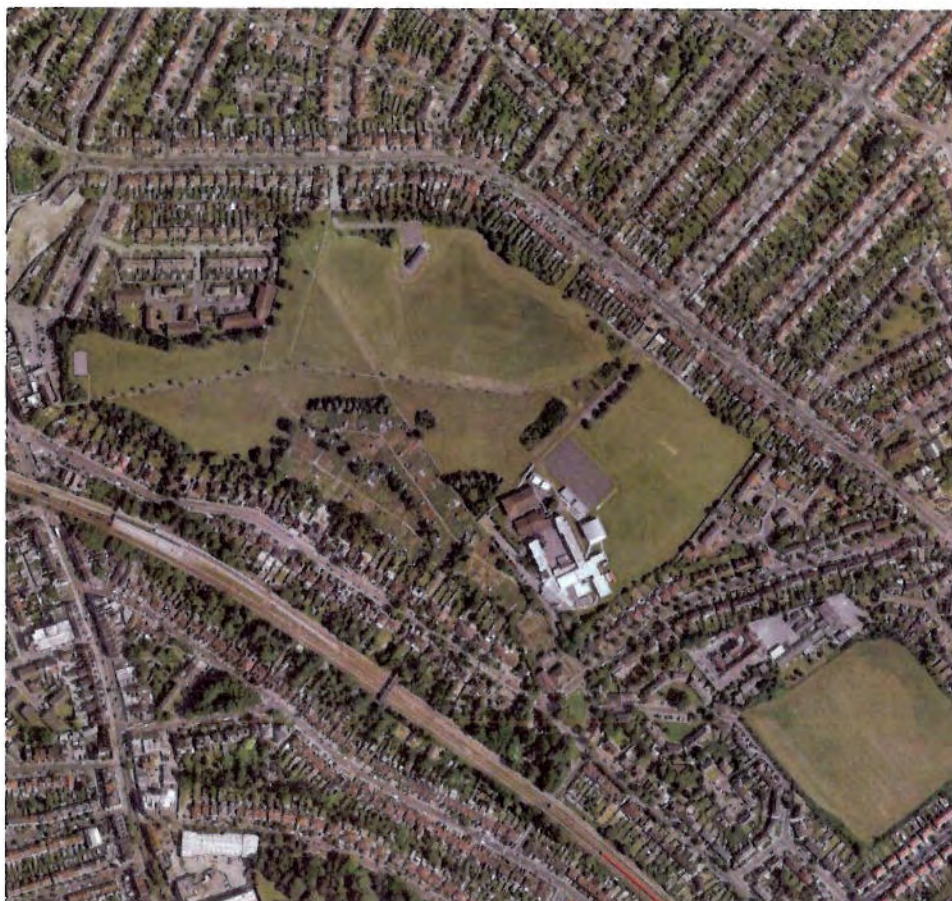
8.3.37 Hackbridge Sustainable Travel Connections

Connecting Hackbridge as a sustainable neighbourhood by developing/improving local, sustainable forms of transport, principally on foot or by cycle. The scope of the project includes:

- pedestrian/cycle improvements along London Road to reduce its role as a barrier to east-west movement
- enhancing the River Wandle's role as a movement corridor
- enhancing east-west pedestrian/cycle routes
- creating new public spaces at Hackbridge Station, Felnax industrial area and Hackbridge District Centre.



Phase One – Project Details



Associated Projects:

Parks to be Proud of (LB Croydon)

Partner/ Supportive organisations / funders:

Environment Agency

Governance:

LB Croydon

Land Ownership:

LB Croydon

Location: TQ 3105 6992

Size: 11.5 hectares, with 320m of river restoration

Planning issues / designs:

-

Project type:

Park renovation

Budget Status:

Secured funds through 'Parks to be Proud Of' - Croydon Council - estimated at £100 - £200k. Resources required for river restoration project are estimated to be approx. £220k.

Next Steps:

'Parks to be Proud Of' - further community engagement and design work through 2010 - implementation to commence late 2010, with completion 2012. River restoration work can only be progressed as funds become available to work up details of full feasibility and current costs.

Project Feasibility Assessment:

'Parks to be Proud Of' - delivery by 2012

8.6.01 Norbury Park

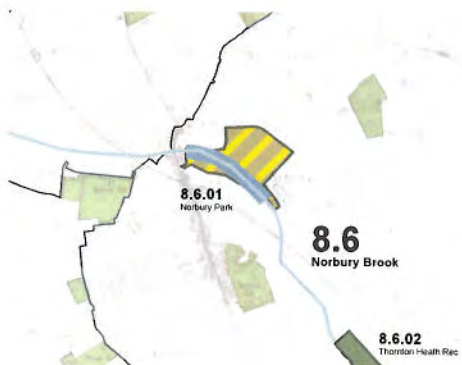
Norbury Parks is a large urban park that has a rather lack-lustre image. The demise of organised sport in the park has left a 'green desert' with recreational and play facilities on offer near the park entrances. The Norbury Brook, a tributary of the River Wandle, runs through the park in a concrete culvert and channel. Norbury Brook is therefore disconnected from both the wider environment and the local community and is currently of low habitat value.

LB Croydon's 'Parks to be Proud Of' initiative is asking the community to decide how resources will be allocated in the regeneration of the park - options currently being voted on include: access and entrance improvements, contributions to costs of deculverting the Brook, wildflower meadows,

refurbish pavilion for community use, BMX track and new play equipment.

The river restoration and associated works will increase access to nature where there is currently a mapped deficiency (GLA), whilst visitor numbers and the quality of the experience can be expected to increase (similar schemes in Greater London report an 78% increase in visitor numbers).

There are opportunities for increased flood storage capacity and for improving the connectivity for pedestrians and cyclists to Norbury Station. Significant earthworks and improvements will enhance the morphological quality of the park, creating a distinctive local destination.



Phase One – Project Details



Associated Projects:

Wandle Park - Waddon Ponds River Restoration (8.5.02), Croydon Connect 2 (8.5.06)

Partner / Supportive organisations / funders:

The Mayor of London's 'Help a London Park' project, 'Parks to be Proud of' - Croydon Council's internal parks improvements initiative.

Governance:

LB Croydon

Land Ownership: LB Croydon

Location: TQ 3153 6565

Size: 8.5 Hectares

Budget Status:

Total project cost = £4m. Secured funding:
 – £1m S106 funding from adjoining Barratt homes residential development;
 – £400K 'Help a London Park' (Mayor of London);
 – £160K 'Parks to be proud of' (Croydon Council);
 – £50K River Restoration from Environment Agency;
 Bid submitted to the Heritage Lottery Fund 'Parks for People' scheme for £1.6m in March 2010:
 – Awarded £94K grant to complete development work
 – Decision on grant for capital work due by end 2010.

Next Steps:

Delivery of river restoration - 2012, and delivery of the other facilities and enhancements - 2011-2013.

A pre-application has been submitted to the London Borough of Croydon planning authority for the river and lake restoration proposal.

8.5.04 Wandle Park

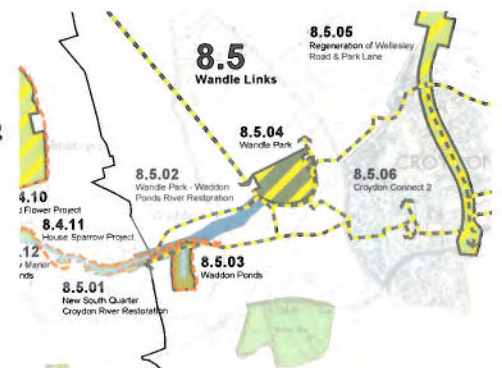
Wandle Park is well-used and well-loved by local residents for its green open space, mature trees, circular promenade, football pitches, skatepark and dedicated park ranger. However, since the 1960s it has suffered a steady decline due to reduced funding, increased user pressures and anti-social behaviour. Located in an area of multiple deprivation close to Croydon's town centre, there is also a problem with crime and the perception of crime in the park.

The park lies on the Wandle Trail, which traces the route of the River Wandle from the river's origins in Croydon to Wandsworth - but the river itself was buried in 1967 in a culvert running underneath the park - originally as a short-term engineering solution to fluctuating water flows due to the intensified urban

development of Croydon town centre. A key ambition of the project is to de-culvert the river within the park - enhancing biodiversity, flood storage and providing cooling to reduce the urban heat island effect.

To attract new users to the park, the project will take advantage of the park's proximity to the tramline that runs between Croydon and Wimbledon. By adding a new entrance to the park, the new community housed in the adjacent residential development will be connected to the park, and wider connections will also be enabled - allowing use of the park as a cut-through from the retail centre in the North West of the park to Croydon town centre.

The project also includes enhancement of the sports provision and changing facilities - with the existing park pavilion to be eco-retrofitted.



Phase One – Project Details



Associated Projects:

Croydon Greenways Programme

Partner/ Supportive organisations / funders:

BIG Lottery , Transport for London - Walking and Greenways.

Governance:

Sustrans / LB Croydon / Transport for London

Land Ownership:

LB Croydon

Location: TQ 3165 6552

Size:

Planning issues / designations:

-

Budget Status:

£800,000 in place. Approx £4m additional required

Next Steps:

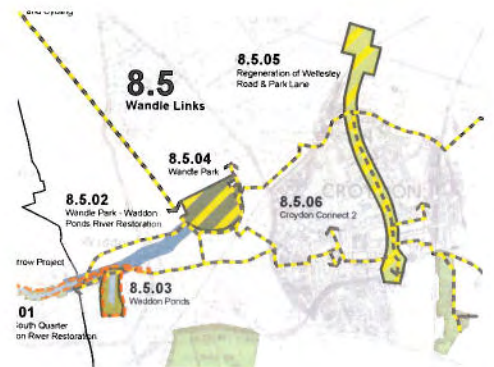
Preliminary design work is current being undertaken on the core route. Once complete these will be circulated to the project steering group and will lead to final agreement on the alignment of the core route

Project Feasibility Assessment:

Delivery by 2013.

8.5.06 Croydon Connect 2

Croydon Park Links – Improving pedestrian and cycle links between Wandle Park, Lloyd Park and South Norwood Country Park, via Croydon town Centre. Partnership project between Sustrans and LB Croydon. Core Route between Wandle Park and Lloyd Park must be delivered by May 2013. Improved crossings of Park Lane and Barclay Road are a key aim of the project.



Phase One – Project Details



Associated Projects:

Croydon Connect 2
Croydon Metropolitan Centre masterplans

Partner / Supportive organisations / funders:

London Borough of Croydon in partnership with TfL and LDA.

Governance:

LB Croydon, Transport for London

Land Ownership: LB Croydon

Location: TQ 3246 6583

Size: 12.3 Hectares

Project Status:

Feasibility.

Budget Status:

Anticipated cost in the region of £45m.

Funding secured to date:

GAF: £390,000

LDA: £50,000

Private sector funding is being sought.

Next Steps:

Major Schemes bid to Transport for London

Project Feasibility Assessment:

Anticipated start on site February 2012.

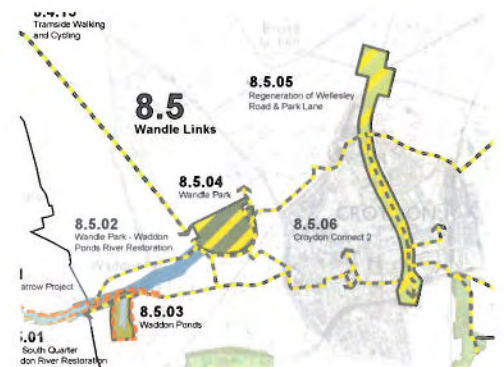
8.5.05 Regeneration of Wellesley Road + Park Lane

A major public realm project in the heart of Croydon town centre. Key project objectives are:

- To enliven the Wellesley Road / Park Lane area with new uses and activities.
- Improving environmental performance with a special focus on public transport, walking and cycling - making sustainable travel connections and promoting healthy lifestyles.
- Creation of a network of high quality public spaces which set the standard for future street improvement projects in the Borough, and increase accessibility to open space and natural areas.
- Improving the perception of Croydon as an attractive place with unique character and identity.

The physical regeneration consists of the following phases:

1. Reconfiguration of the Park Lane gyratory to improve traffic priority, creating a street and a city square.
2. Transformation of the dual carriageway to include a dedicated public transport corridor, cycle routes, at grade pedestrian crossings and various other facilities including recreational spaces.
3. Upgrading public transport facilities, better bus interchange and waiting facilities.
4. A suite of smaller public realm interventions at different points along the project area.
5. Integration and development of the public realm network creating well connected 'urban living rooms' in the areas adjacent to the main corridor.



Draft 24.09.10 47

Phase One – Project Details



Associated Projects:

Greenways, Croydon Connect 2

Partner / Supportive organisations / funders:

TfL, Sustrans.

Governance:

Cross Borough (LB Merton, LB Sutton, LB Croydon), Transport for London (Tramlink)

Land Ownership: -

Location: TQ 3246 6583

Size:

Budget Status:

Project cost estimated at £1m - £2m. No funding is currently in place. Anticipated funding sources: Cross Borough Sec 106, TfL.

Next Steps:

Feasibility work to determine cost of connection from end of Connect2 route to Mitcham junction.

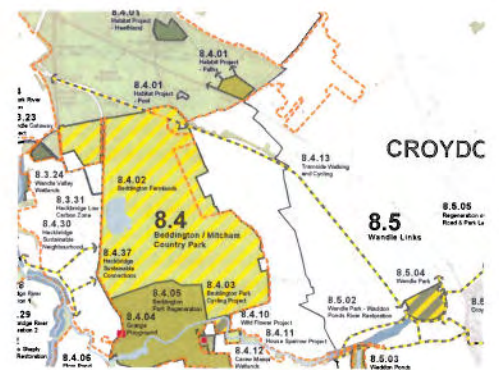
Project Feasibility Assessment:

Feasibility study carried out by Sustrans / Transport for London "SE Greenways and SW Greenways"

8.4.13 Tramside Walking & Cycling Route

Improvement and installation of shared-use route between Wandle Park and Mitcham Junction, led by Boroughs, TfL and Sustrans.

The proposed alignment was initially picked up in the SW Greenways feasibility study in 2006/7. The section within LB Croydon is currently being progressed as part of the Connect2 scheme. No more feasibility work has been done at this stage on extending the route beyond the end of the Connect2 projects, but the project has great potential to improve the walking and cycling network in this area and to support the development of an integrated open space network.



Phase One – Project Details



8.0.01 C-Change

C-Change aims to engage with citizens, practitioners and policy makers to facilitate changes in behaviour, land use and policy that will help to 'climate proof' our cities now and in the future. The initiative aims to mobilise behaviour change and to demonstrate practical open space responses to climate change adaptation and mitigation via two interrelated projects in the Wandle:

Community engagement and behaviour change:

The project aims to engage communities about climate change and demonstrate how small changes in their everyday lives can make a difference to our climate in the future. Groundwork's Green Doctors will work in partnership with LB Merton in the Wandle

Valley Low Carbon Zone to provide home energy advice and to support households to reduce CO2 emissions by 20%. The project includes the creation of an edible garden at the Acacia Intergenerational Centre - providing a unique community space for growing, harvesting and cooking food and for learning about sustainable living. Volunteers will be recruited as Climate Change Champions to work with people to help reduce their carbon footprint.

Climate-proofing the WVRP Spatial Plan

This project will engage land managers, planners and communities in identifying the potential social, economic and environmental impacts of climate change and exploring a range of responses to ensure a sustainable future for Wandle Valley communities.

Associated Projects:

Wandle Valley Low Carbon Zone (Merton)
Acacia Intergenerational Centre (Merton)

Partner/ Supportive organisations / funders:

Priority 4 of the EU INTERREG IVB
Partnership incorporates 9 national, regional and local government players representing 7 city regions with major economic significance in Europe
GLA Low Carbon Zone
London Borough Merton
Sutton Merton Primary Care Trust

Governance:

Groundwork London is the Lead partner for the C-CHANGE project. Wandle Valley is the South London Sub Regional Project.

Land Ownership:

Various - all Wandle.

Size: Wandle Valley (approx. 200 square kilometers)

Budget Status:

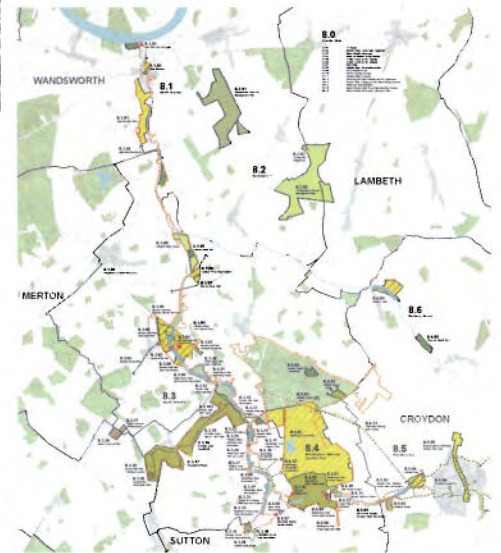
Total budget of £350,000. £310,000 in place, £40,000 of further funding sought.

Next Steps:

Delivery has begun and will continue until 2012. Additional match funding will continue to be sought.

Project Feasibility Assessment:

On-site 2009-2010.





Wandle Meadows Nature Park

A photograph of a park with a dirt path, trees, and a large metal tower structure under a cloudy sky. The path is in the foreground, leading towards a cluster of trees. A large, dark metal tower structure is prominent on the right side of the image. The sky is filled with dramatic, grey clouds.

Forward Strategy

This section concludes the Area Framework with a series of recommendations for further action, including funding and governance arrangements.

Forward Strategy – Gap Analysis

Gap Analysis

The projects profiled in this Area Framework have been identified as contributing to the objectives of the All London Green Grid and the development of the Wandle Valley Regional Park. They all support the development of the Wandle Valley Regional Park as an exemplar of Green Infrastructure for the London Region. Most of the projects are deliverable in a short time scale, and have some funding allocated. However, through the research across the study area, several potential projects for the future have been identified - either in the form of aspirational projects (identified through dialogue with partner organisations) which are without project owners and delivery mechanisms, or previously unidentified projects which can help to deliver the strategic objectives set out within this document.

Many of these potential projects focus upon linkages which will improve access to the Wandle Valley and the wider green infrastructure from the surrounding areas:

- Links to town centres such as Wimbledon, Streatham, Mitcham, Thornton Heath and Sutton.
- Links to transport hubs such as Mitcham Junction and Earlsfield Station.
- Links between the Wandle Valley and peripheral green spaces such as Clapham Common, Motspur Park, Nonsuch Park, Roundshaw Park.

The Wandle Valley is heavily characterised by its industrial character and includes significant areas of Strategic Industrial Land which border the open spaces along the Valley. The opportunity exists to create an improved and mutually beneficial relationship between the open spaces of the proposed Regional Park and the industrial sites such as Garratt Business Park, Durnsford Industrial Estate, Felnax Trading Estate, Merton Industrial Park, Beddington Cross Industrial Estate and Abbey Industrial Estate - yet few projects have begun to address how this relationship might be reinvented. The development of projects and initiatives which allow improved access to the River through industrial land and which develop improved edge treatments to industrial areas should be a significant focus over the coming years.

- Identified projects
- Strategic gaps in links
- Project recommendations
- Improved park / industry boundary
- Industrial sites



Forward Strategy – Recommendations

This Wandle Valley Area Framework supports the development of the Wandle Valley Regional Park and promotes the wider development of a green infrastructure in the Wandle Valley. The WVRP will form the heart of the wider green infrastructure.

The Wandle Valley Regional Park Next Steps

There has long been the aspiration to have the Wandle Valley recognised as a vital resource for the residents of South-West London. With the identification of the Wandle Valley as a potential new Regional Park for London in the Mayor's London Plan, and the formation of the partnership between the local authorities in the Development Board, and the supporting partners in the Management Board, and the community involvement through the Wandle Forum, this aspiration is moving towards reality. All of the partners are committed to the Vision [2008] and are working towards developing the Regional Park to meet the needs of the local, and wider regional community, providing an open space and sustainable transport network that contributes to the sustainability, natural character and landscape heritage of the Valley.

A significant amount of work remains to be done to develop the Regional Park. Governance and funding structures must be investigated, decided upon and implemented. An overall Management Plan for the Park must be created that all of the partners can sign up to. Partners must learn to think in a strategic way to support the creation of an integrated network of spaces and destinations, rather than managing a mosaic of individual spaces.

Partners must also continue to progress individual projects that support the overall aspirations of the Regional Park.

Governance and Funding

In the short term, an essential step is to commission a study of governance and funding options for the Regional Park. This study will investigate the resources that partners are currently spending on the management and maintenance of public open spaces, sustainable transport routes and visitor facilities within the regional park boundaries. The study should research and identify management structure options, using examples from other regional park or landscape partnership management schemes. A cost/benefit analysis for each option should be included, with a recommendation for which option would be most effective, and an Action Plan included identifying all of the steps needed to put

that governance structure in place. The study must recognise that currently there are discrepancies in standards of management and maintenance across the network of open spaces, and partners may have to contribute greater funding in order to achieve uniform quality of maintenance across the Regional Park.

Management Plan

In the medium term, a Management Plan must be created for all of the public open space and sustainable transport routes of the Regional Park. The plan must include a space by space analysis of current maintenance standards and practices, infrastructure improvement requirements and overall gaps in the standards of provision. The plan should propose a series of management and maintenance standards that the landowners can sign up to, and integrate into their future management regimes and contracts. Standards proposed should be appropriate to attract visitors to the Park as a destination, sustainable and fit for purpose. The plan should identify street furniture requirements that will contribute to the Park as an attractive and unified place to visit. The plan should include branding the Regional Park to create a recognisable identity that park users will recognise and begin to associate the network of open spaces together as a unified whole. Costed options must be included with a timetabled Action Plan for implementation.

Stakeholder and Community Engagement

A key principle shared by the partners has always been community engagement. The SAUL project that developed the 2008 Vision was centred on involving members of the wider community in articulating their aspirations for the Regional Park. Through that process, the Wandle Forum was established to ensure that community organisations were represented in the decision making process of any future governance structure for the Regional Park. At present the development process is strongly focused on Local Authorities, the GLA, statutory bodies such as Natural England and the Environment Agency. Any new governance structure that is put in place must recognise the importance of the local and regional communities in the future management of the Regional Park, and projects must be developed to support Stakeholder engagement, especially in harder to reach communities.

Key recommendations for the advancement of the WVRP include;

- Determine a governance and management structure
- Identify a funding framework
- Develop a brand to support the shared identity of the green and open spaces
- Prepare an overarching management plan
- Support and utilise the Wandle Forum to ensure community engagement

Project Development

A barrier to project delivery both in the WVRP and in the wider Wandle Valley at present is lack of resources within local authorities to develop projects to a stage where funding could be sought and implementation initiated. Officers' time is stretched to capacity managing open space and transport provision. Further resources must be identified to develop outline projects ideas into detailed and deliverable realities. Partners should progress funding applications that include development phases of projects, such as the Heritage Lottery Fund's Landscape Partnerships programme which is currently being advanced by a project steering group. Partners should also consider increasing the annual contribution of each Borough to support a Project Development Officer who could work across the Wandle Valley to support partners to progress projects to implementation stage, or to commission consultants to develop certain projects on their behalf. Detailed projects are more eligible for funding grants from other bodies, so partners should support an 'invest to gain' policy on project development. Resources must also be put into grant applications, which are currently beyond the time capacity of most of the project partners.

Detailed improvement plans should be developed for River Restoration, Open Space Improvement, and Green Transport improvements. These plans will require partners to share resources and expertise to develop these plans to a usable state.

Project Delivery

Projects should be prioritised for delivery on the basis of their contribution to the development of the Regional Park as a Green Infrastructure network. Quick wins should be identified for projects that are funded and easily deliverable in the short term as Phase 1 of the development of the Regional Park. Achievements of the partners in project delivery should be quantified and celebrated across the partnership to publicise the momentum of the work on the Regional Park.

Forward Strategy – Recommendations

Phase 1 projects should focus on those that improve the network of routes and remove barriers to access within the Regional Park and connections to it, increasing accessibility for the local community and wider users.

Early projects should focus on the improvement of existing open spaces, such as Wandle Park, Norbury Park, and King George's Park.

Later Phases should focus on increasing the open space provision within the Regional Park through opening spaces that are currently closed to the public and creating new spaces through planning gain. Planning Policies should be put in place that maximise protection of the open spaces and the surrounding townscapes of the Regional Park to embed high quality design, sustainability, climate change mitigation and increased access supporting the objectives of the Regional Park.

Partners should continue to work with local landowners to overcome barriers of access and promote network connectivity.

- Develop unified improvement plans relating to river restoration, open space and green transport
Align relevant planning policies to support the objectives of the Area Framework

- Ensure the current Management Board directs the implementation of the Area Framework and the Development Board guides the vision and the strategy for the WVRP in parallel with furthering the objectives of the wider area framework.

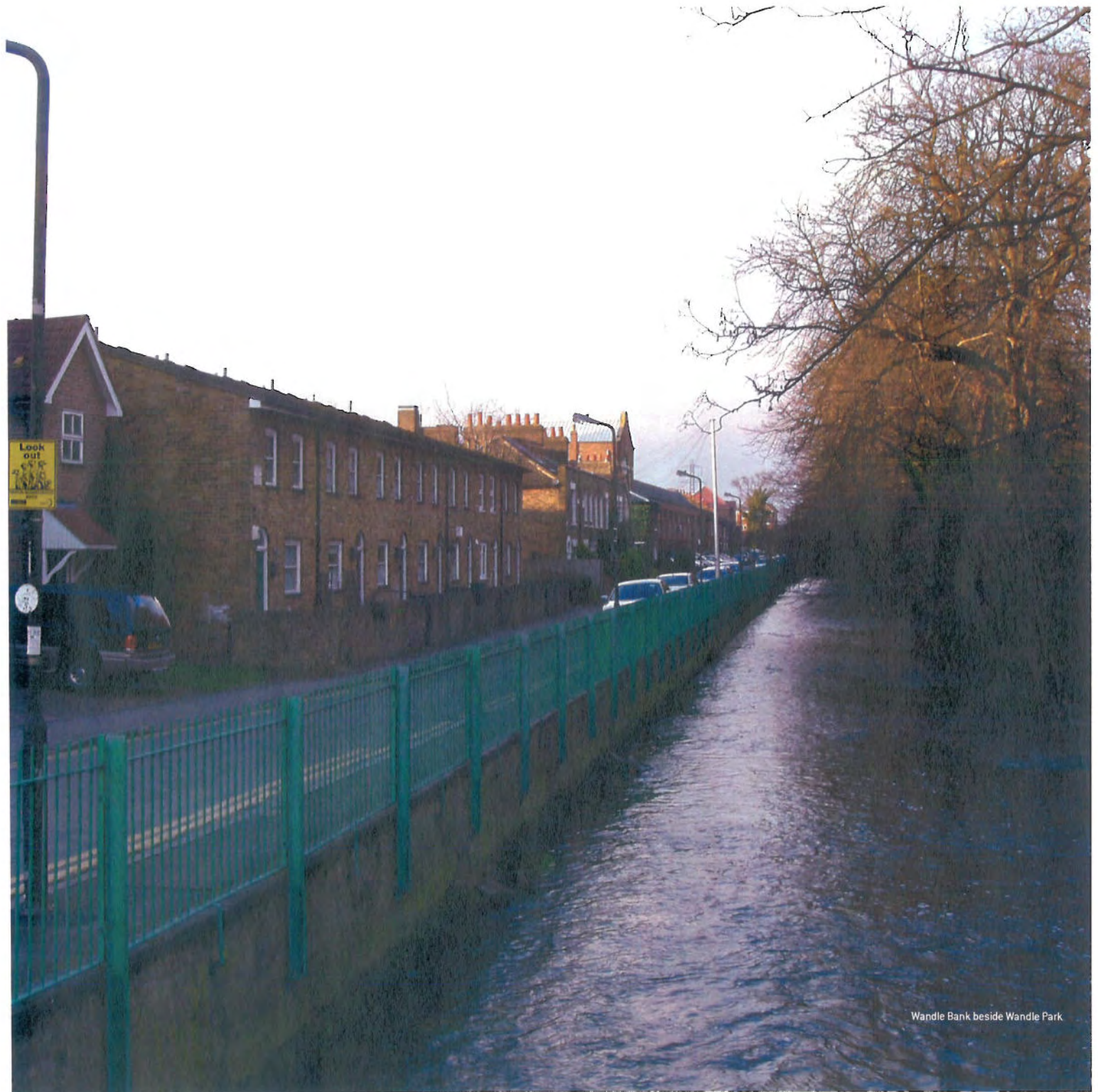
Programme Management

The projects identified in this Area Framework document are diverse, spanning a range of objective areas, and complex in their needs for funding and development. The projects include those that are deliverable in the coming months, and those that will not be delivered for more than a decade. A project implementation framework should be devised to assist in the prioritisation of those projects, and in the identification of outputs and impacts. The Management Board of the partnership should be tasked with reviewing the progress of the project implementation against the objectives set out in this document and against a timetable of delivery. Achievements and successes should be identified and widely celebrated.

The Development Board must act as the custodians of the Wandle Valley with an eye to its long term future, ensuring that policies and programmes are put into place that support the Regional Park as an attractive and sustainable asset for London for generations to come.

Key Recommendations for delivery of the wider Area Framework

- Identify greater resources for project development, including the creation of a Project Development officer post.



Wandle Bank beside Wandle Park

Appendices – Baseline Description

Open Space Typology

This map shows the distribution of open space in the Wandle Valley area with typologies set out according to the London Plan. The area is characterised by an approximately even distribution of open spaces, including several commons. In terms of quantity and distribution of open space, these are not heavily focussed around the River Wandle itself - but the river does act as an occasionally fragmented green spine, connecting the four boroughs to the River Thames.

Flood Risk

The Wandle Valley is subject to flood risk: tidal to the north due to the Thames, and fluvial to the south. Projects and initiatives should therefore address the issues of water and flood management and risk reduction, taking account of the potential impact of climate change upon the projected flood risks.

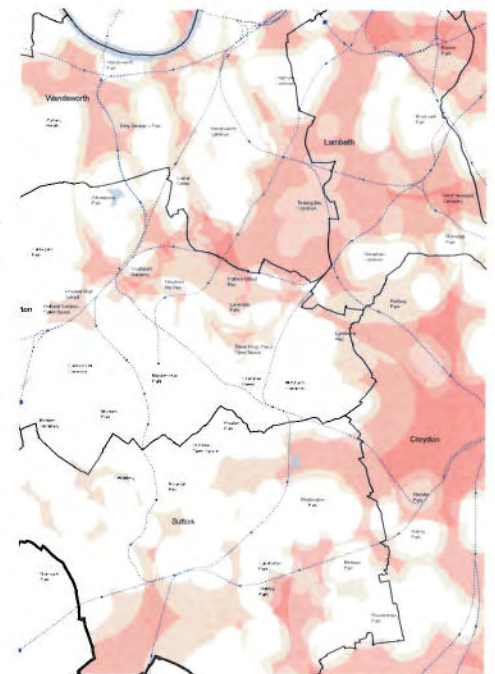
Park Deficiencies

Following on from the open space typology map, the areas of deficiency to open space are unsurprising. Whilst Merton has reasonable provision across the majority of the borough, some communities in Sutton and Wandsworth are disconnected from the green infrastructure. Croydon Metropolitan Centre is particularly deficient in access to open space. Projects should focus on those communities suffering from open space deficiency, and seek to improve open spaces in these areas and provide connections to the wider parks network.

- Regional Parks
- Metropolitan Parks
- District Parks
- Local Parks
- Small Open Spaces
- Linear Parks
- Private Open Space

- Tidal Flood Risk
- Fluvial Flood Risk








- + Open Space Deficiency (6/6/2010)

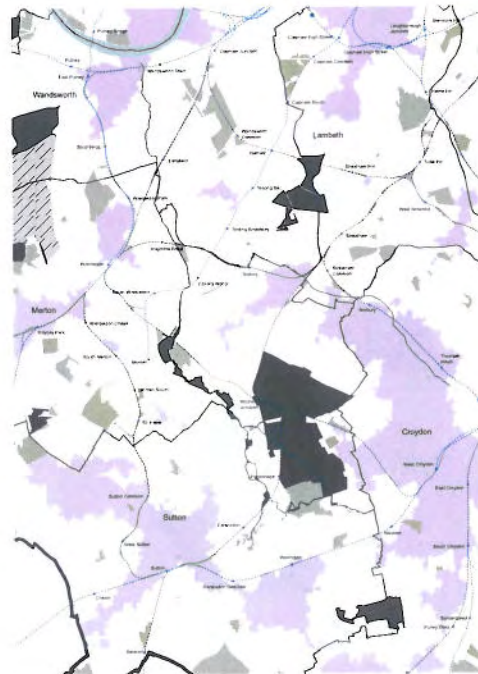


Appendices – Baseline Description

Areas of Deficiency in Access to Nature

Proposals and projects within the Wandle Valley Area should seek to alleviate the deficiencies in access to nature suffered by some neighbouring communities as shown in this mapping. This could be achieved through increasing the environmental value and biodiversity of existing and new green space, and forming accessible links into the green corridor and local parks network from these areas of deficiency.

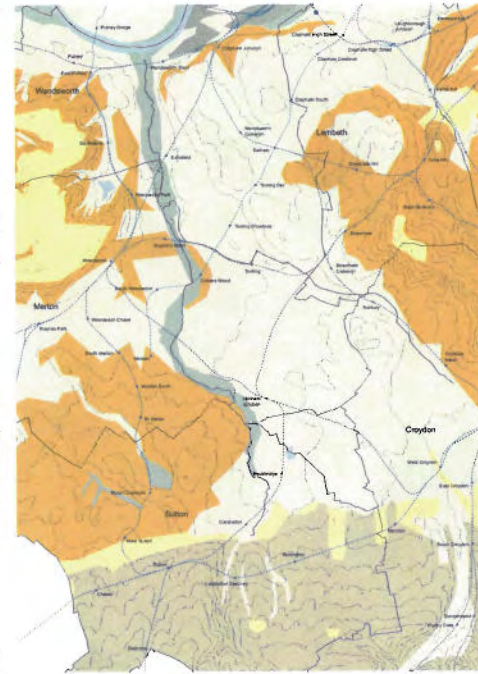
-  SSSI SE England
-  SINC Metropolitan
-  SINC Borough 1
-  SINC Borough 2
-  SINC Local
-  Deficiency in Access to Nature
-  Sites to reduce areas of deficiency



Ecological and Landscape zones

The areas immediately around the River Wandle are predominantly areas of flood plain soils – this fluvial swathe cuts through a wide expanse of low level gravels that define the valley with the rising topography of clays to the east and west and Chalk soils to the south.

-  Chalk soils
-  Gravel and sandy hilltops
-  Clays
-  Loams
-  Low level gravels
-  Floodplain soils



Strategic context mapping

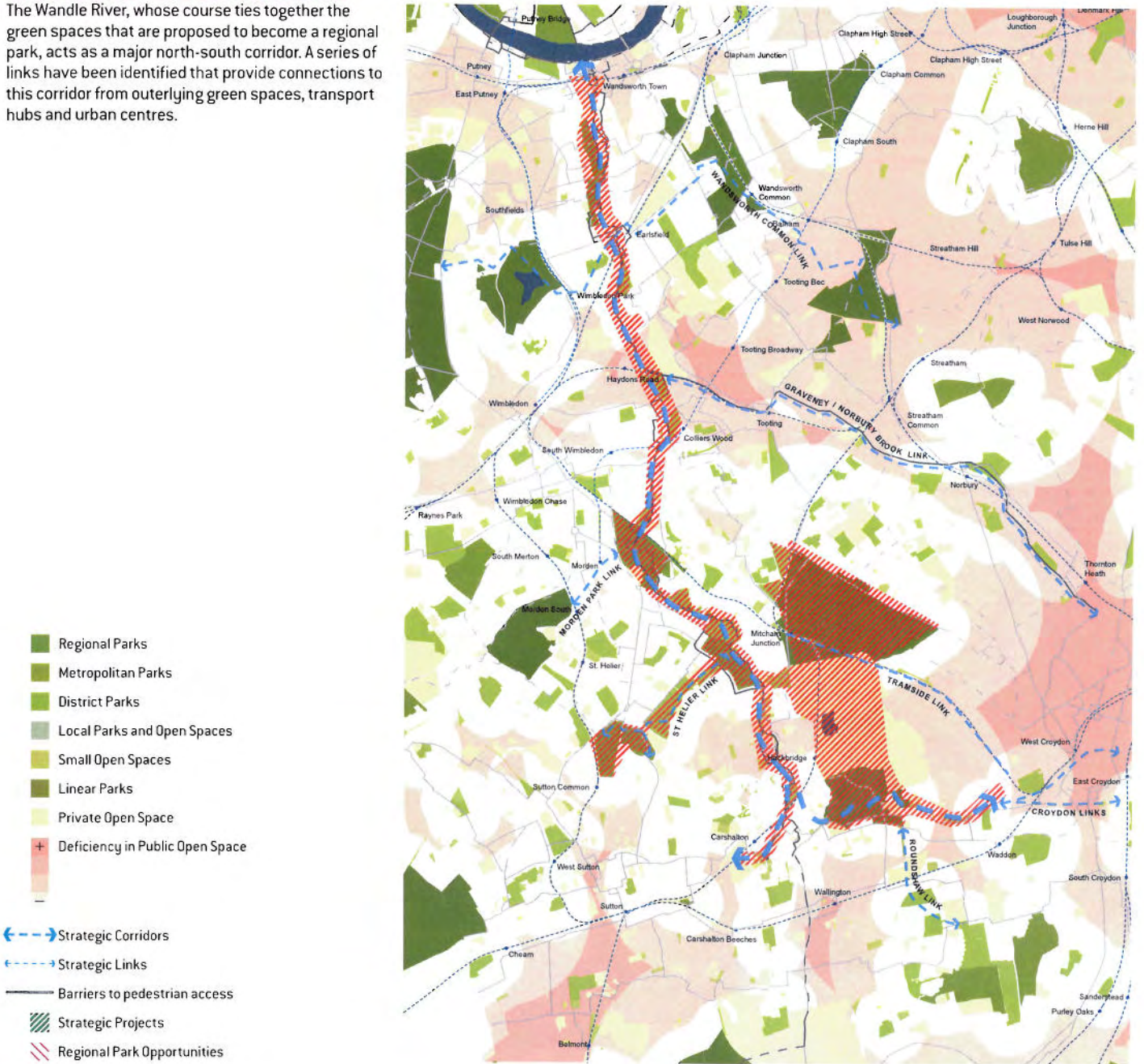
The maps below illustrate the Open Space Policies and Strategies currently in place across the four constituent Boroughs – these form an existing strategic context defined at borough level, across which this Area Framework will operate in order to direct projects towards delivery of the ALGG Strategic Objectives defined for the whole Wandle Valley Area.



Appendices – Links

The Wandle Valley Corridor and associated Links

The Wandle River, whose course ties together the green spaces that are proposed to become a regional park, acts as a major north-south corridor. A series of links have been identified that provide connections to this corridor from outerlying green spaces, transport hubs and urban centres.



Appendices – Links

The Wandsworth Common Link

The Wandsworth Common link runs through cemeteries and recreation grounds, containing a mosaic of woodland, grassland and scattered trees, linking to the Wandle River via the Capital Ring strategic walk. This link continues through to Wimbledon Park to the west of the area.

The Graveney / Norbury Brook Link

The Graveney/Norbury Brook link runs through residential areas. It is often canalised or inaccessible until it reaches Norbury Park, where it goes on to link with open spaces in Thornton Heath.

The Roundshaw Link

The Roundshaw link comprises the open spaces around the Roundshaw estate, Mellows Park and Bandon Hill cemetery. There is currently no clear connection with the Wandle River.

The St Helier Link

The St Helier link runs east-west through Poulter Park, Revesby Wood, Middleton Open Space, St Helier Open Space, and Rose Hill Park; a collection of open spaces that are planned to become united into a single district park

The Tramside Link

The Tramside link takes advantage of the existing tram route to offer pedestrian and cycle connections from Croydon to Mitcham Common.

The Croydon Links

The Croydon links connect Croydon Metropolitan Centre - an area of significant deficiency in access to open space - to the south eastern tip of the proposed Regional Park via Wandle Park and Waddon Ponds

The Morden Park Link

The Morden Park link connects the Morden Park to the proposed regional park via Morden Hall Park

Appendices – Group Membership

Sub-area chair

Jennifer Ullman jennifer@jenniferullman.com

Jennifer Ullman is a landscape management and design consultant. Formerly Chief Parks Officer for Wandsworth Council leading the £11 million restoration of the Grade II* listed Battersea Park, she now acts as Projects Advisor to the Council on the development of the Wandle Valley Regional Park. Current projects include Parks Strategies and the development of management policies for other London Boroughs. Jennifer is also a Trustee of the Royal Botanic Gardens Kew.

Design for London design advisor

5th Studio london@5thstudio.co.uk

5th Studio is an award-winning design practice whose work spans across the fields of architecture, urbanism and landscape. 5th Studio have extensive experience of working at a strategic scale within complex urban landscapes. Work within London includes a suite of projects within the Lea Valley, a public realm strategy for Park Royal, and work exploring the urban integration of Crossrail. See www.5thstudio.co.uk for further information.

Glossary of terms

| | |
|------|---|
| ALGG | All London Green Grid |
| EA | Environment Agency |
| ELGG | East London Green Grid |
| EU | European Union |
| GAF | Growth Area Funding |
| GI | Green Infrastructure |
| GLA | Greater London Authority |
| HLF | Heritage Lottery Fund |
| LDA | London Development Agency |
| LDF | Local development framework |
| LWT | London Wildlife Trust |
| NE | Natural England |
| NT | National Trust |
| SAUL | sustainable and accessible urban landscapes |
| S106 | Section 106 Agreement for planning gain |
| TfL | Transport for London |
| WVRP | Wandle Valley Regional Park |

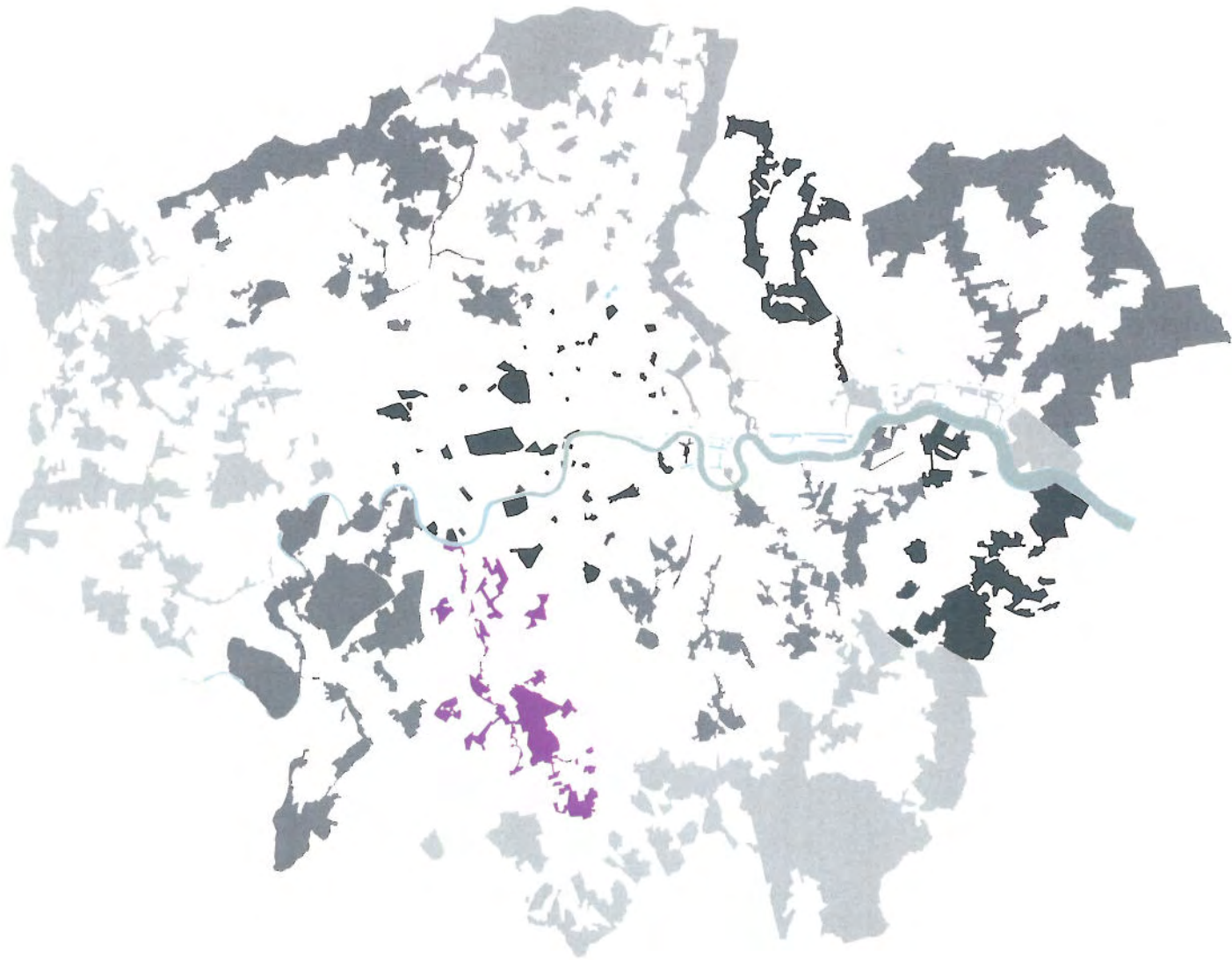
Members

Cllr Sarah McDermot
Cllr Lucy Allan
Cllr Diane NeilMills
Cllr Andrew Judge
Cllr Jayne McCoy
Cllr Graham Tope
Cllr Sara Bashford
Cllr Jason Perry

Peter Robinson
J Birtles
R M Williams
Jennifer Ullman
S Cooper Grundy
Wendy Bell
Barry Lambton
Tim Naylor
Tom Sweeney
Pauline Scott-Garrett
Mark Dalzell
Colin Hall
Jeff Wilson
Martin Boyle
Doug Napier
Caroline Birchall
Claire Newill
Joanna Watson
Jane Wilson
Angela Brown
Angela Gorman
Carlo Laurenzi
Katrina Baker
Ben Coles
Sue Walton
Chris Carter
Vicki Carroll
John Hawks
Chris Hazelton
Joanna Heisse
David Webb
Ian Smith
Zoe Colbeck
Simon Cranmer
Ian Wilson
Jane Carlsen
Kirsty Jones
Sheila Stones
Tom Sharland

Wandsworth Borough Council
Wandsworth Borough Council
London Borough of Merton
London Borough of Merton
London Borough of Sutton
London Borough of Sutton
London Borough of Croydon
London Borough of Croydon

Wandsworth Council
Wandsworth Council
Wandsworth Council
Wandsworth Council
Wandsworth BC
Croydon Council
Croydon Council
Croydon Council
Croydon Council
Croydon Council
Sutton Council
Sutton Council
Sutton Council
Merton Council
Merton Council
Natural England
Natural England
Natural England
Natural England
South London Partnerships
London Wildlife Trust
London Wildlife Trust
Groundwork
Groundwork
Groundwork
Wandle Forum
Wandle Valley Trust
Wandle Valley Festival
Environment Agency
Environment Agency
Environment Agency
South London Partnerships
National Trust
National Trust
National Trust
Greater London Authority
Thames Water
English Heritage
Sustrans



Credits

Authors: Jennifer Ullman, 5th Studio, Design for London

Note: